

PPP3CA Polyclonal Antibody

Catalog number: 13422-1-AP

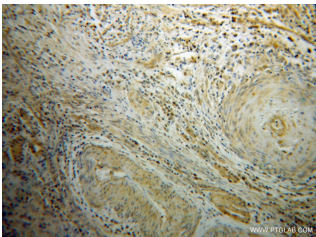
Size: 75 µg/150 µl

Source: Rabbit

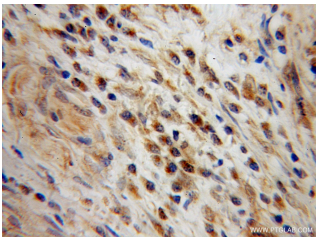
Isotype: IgG

Synonyms:

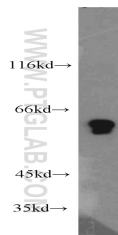
PPP3CA; CALN, CALNA,
CALNA1, CAM PRP catalytic
subunit, CCN1, CNA, CNA1,
PPP2B, PPP3CA



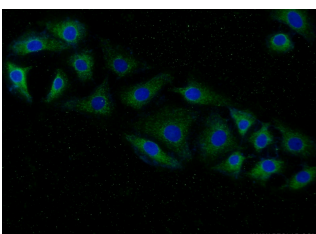
Immunohistochemical of paraffin-embedded human cervical cancer using 13422-1-AP (PPP3CA antibody) at dilution of 1:100 (under 10x lens)



Immunohistochemical of paraffin-embedded human cervical cancer using 13422-1-AP (PPP3CA antibody) at dilution of 1:100 (under 40x lens)



mouse skeletal muscle tissue were subjected to SDS PAGE followed by western blot with 13422-1-AP (PPP3CA antibody) at dilution of 1:1500



Immunofluorescent analysis

Applications

Tested applications:	ELISA, WB, IHC, IP, IF
Species specificity:	Human, Mouse; other species not tested.
Calculated PPP3CA MW:	511aa, 61 kDa
Observed PPP3CA MW:	61 kDa
Positive WB detected in	Mouse skeletal muscle tissue, mouse heart tissue, SH-SY5Y cells
Positive IP detected in	Mouse heart tissue
Positive IHC detected in	Human cervical cancer tissue
Positive IF detected in	SH-SY5Y cells
Recommended dilution:	WB: 1:1000-1:10000 IP: 1:500-1:5000 IHC: 1:20-1:200 IF: 1:20-1:200

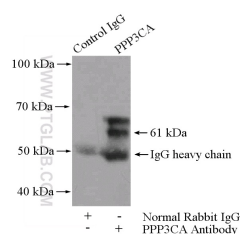
Application key: WB = Western blotting, IHC = Immunohistochemistry, IF = Immunofluorescence, IP = Immunoprecipitation

Immunogen information

Immunogen:	Ag4203
GenBank accession number:	BC025714
Gene ID (NCBI):	5530
Full name:	Protein phosphatase 3 (formerly 2B), catalytic subunit, alpha isoform

Product information

Purification method:	Antigen affinity purification
Storage:	PBS with 0.02% sodium azide and 50% glycerol pH 7.3. Store at -20°C.



IP Result of anti-PPP3CA

of (-20 Ethanol) fixed SH- (IP:13422-1-AP, 4ug;
SY5Y cells using 13422-1-AP(Detection:13422-1-AP 1:1000)
PPP3CA Antibody) at dilution with mouse heart tissue lysate
of 1:50 and Alexa Fluor 488- 4400ug.
conjugated AffiniPure Goat
Anti-Rabbit IgG(H+L)