

PTGES2 Polyclonal Antibody

Catalog number: 10881-1-AP

Size: 20 µg/150 µl

Source: Rabbit

Isotype: IgG

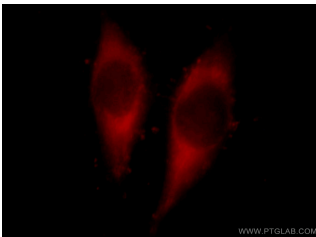
Synonyms:

PTGES2; C9orf15, FLJ14038,

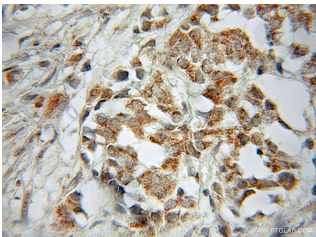
GBF1, mPGES 2, PGES2,

prostaglandin E synthase 2,

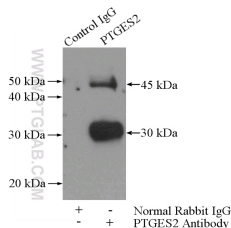
PTGES2



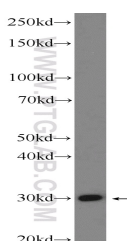
Immunofluorescent analysis of HeLa cells, using PTGES2 antibody 10881-1-AP at 1:25 dilution and Rhodamine-labeled goat anti-rabbit IgG (red).



Immunohistochemical of paraffin-embedded human breast cancer using 10881-1-AP (PTGES2 antibody) at dilution of 1:50 (under 40x lens)



IP Result of anti-PTGES2 (IP:10881-1-AP, 4µg; Detection:10881-1-AP 1:500) with mouse heart tissue lysate 4000µg.



HeLa cells were subjected to

Background

PTGES2(Prostaglandin E synthase 2) catalyzes the conversion of unstable intermediate of prostaglandin E2 H2 (PGH2) into the more stable prostaglandin E2 (PGE2) form. Its predicted size is 42 kDa, but it was detected one band of 35 kDa in the prostate and two bands of 30 kDa, 50 kDa in liver by western blot (PMID:17566096). PTGES2 protein is a homotetramer, whereas two PTGES2 molecules each form a strongly interacting dimer (PMID:19268562).

Applications

Tested applications:	ELISA, IHC, IF, WB, IP
Cited applications:	WB
Species specificity:	Human, Mouse, Rat; other species not tested.
Cited species:	Human
Calculated PTGES2 MW:	42 kDa
Observed PTGES2 MW:	30-35 kDa, 45 kDa
Positive WB detected in	HeLa cells, HEK-293 cells, HepG2 cells, human stomach tissue, mouse heart tissue
Positive IP detected in	Mouse heart tissue
Positive IHC detected in	Human breast cancer tissue, human colon cancer tissue, human heart tissue
Positive IF detected in	HeLa cells, HepG2 cells
Recommended dilution:	WB: 1:200-1:2000 IP: 1:200-1:2000 IHC: 1:20-1:200 IF: 1:10-1:100

Application key: WB = Western blotting, IHC = Immunohistochemistry, IF = Immunofluorescence, IP = Immunoprecipitation

Immunogen information

Immunogen:	Ag1329
GenBank accession number:	BC011613
Gene ID (NCBI):	80142
Full name:	Prostaglandin E synthase 2

Product information

Purification method:	Antigen affinity purification
Storage:	PBS with 0.1% sodium azide and 50% glycerol pH 7.3. Store at -20°C.

**SDS PAGE followed by
western blot with 10881-1-
AP(PTGES2 Antibody) at
dilution of 1:600**