

RAB26 Polyclonal Antibody

Catalog number: 14284-1-AP

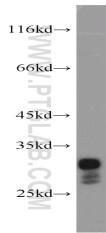
Size: 32 µg/150 µl

Source: Rabbit

Isotype: IgG

Synonyms:

RAB26; RAB26, Ras related
protein Rab 26, V46133



mouse pancreas tissue were subjected to SDS PAGE followed by western blot with 14284-1-AP(RAB26 antibody) at dilution of 1:300

Applications

Tested applications:	ELISA, WB
Cited applications:	IF, WB
Species specificity:	Human, Mouse, Rat; other species not tested.
Cited species:	Human
Calculated RAB26 MW:	28 kDa
Observed RAB26 MW:	27-30 kDa
Positive WB detected in	Mouse pancreas tissue
Recommended dilution:	WB: 1:200-1:2000

Application key: WB = Western blotting, IHC = Immunohistochemistry, IF = Immunofluorescence, IP = Immunoprecipitation

Immunogen information

Immunogen:	Ag5581
GenBank accession number:	BC066913
Gene ID (NCBI):	25837
Full name:	RAB26, member RAS oncogene family

Product information

Purification method:	Antigen affinity purification
Storage:	PBS with 0.02% sodium azide and 50% glycerol pH 7.3. Store at -20°C.