

## SLU7 Polyclonal Antibody

Catalog number: 12050-1-AP

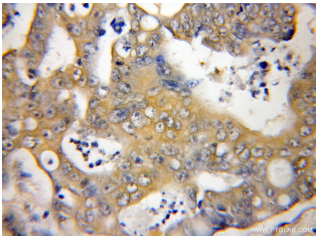
Size: 20 µg/150 µl

Source: Rabbit

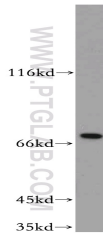
Isotype: IgG

Synonyms:

SLU7; SLU7, Pre mRNA splicing factor SLU7, hSlu7, 9G8



Immunohistochemical of paraffin-embedded human colon cancer using 12050-1-AP (SLU7 antibody) at dilution of 1:50 (under 10x lens)



Jurkat cells were subjected to SDS PAGE followed by western blot with 12050-1-AP (SLU7 antibody) at dilution of 1:100

### Applications

Tested applications:	ELISA, WB, IHC
Species specificity:	Human, mouse, rat; other species not tested.
Calculated SLU7 MW:	586aa, 68 kDa
Observed SLU7 MW:	68kd
Positive WB detected in	Jurkat cells, HeLa cells, K-562 cells, Y79 cells, mouse colon tissue
Positive IHC detected in	Human colon cancer
Recommended dilution:	WB: 1:200-1:2000 IHC: 1:20-1:200

Application key: WB = Western blotting, IHC = Immunohistochemistry, IF = Immunofluorescence, IP = Immunoprecipitation

### Immunogen information

Immunogen:	Ag2680
GenBank accession number:	BC010634
Gene ID (NCBI):	10569
Full name:	SLU7 splicing factor homolog ( <i>S. cerevisiae</i> )

### Product information

Purification method:	Antigen affinity purification
Storage:	PBS with 0.02% sodium azide and 50% glycerol pH 7.3. Store at -20°C.