

## FBLIM1 Polyclonal Antibody

Catalog number: 13349-1-AP

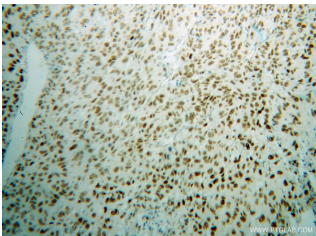
Size: 277 µg/150 µl

Source: Rabbit

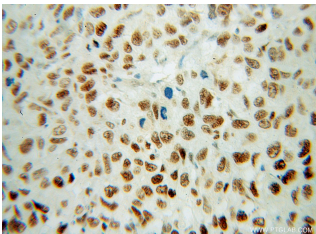
Isotype: IgG

Synonyms:

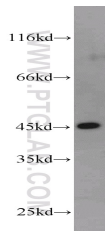
FBLIM1; CAL, DKFZp434G171, FBLIM1, FBLP 1, FBLP1, filamin binding LIM protein 1, MIG2 interacting protein, Migfilin, RP11 169K16.5



Immunohistochemical of paraffin-embedded human lung cancer using 13349-1-AP(FBLIM1 antibody) at dilution of 1:100 (under 10x lens)



Immunohistochemical of paraffin-embedded human lung cancer using 13349-1-AP(FBLIM1 antibody) at dilution of 1:100 (under 40x lens)



HepG2 cells were subjected to SDS PAGE followed by western blot with 13349-1-AP(FBLIM1 antibody) at dilution of 1:500

### Background

FBLIM1, also known as CAL, Mig-2-interacting protein or Migfilin, is a cytoplasmic protein that belongs to the LIM superfamily. FBLIM1 is a protein found in cell-cell and cell-ECM connections where it co-localizes with FLNA/C and FLNB. FBLIM1 was found to bind directly to FLNA/C and to be an important regulator of cell shape and motility. FBLIM1 exerts its influence on cellular functions by interacting with various binding partners; FLN via its N-terminal domain, VASP and Src via its proline-rich region, and kindlin-2 and the cardiac transcription factor, CSX/NKX2-5 via its C-terminal LIM domains. Three isoforms exist for FBLIM1 due to alternative splicing events, namely FBLP-1A, FBLP-1 and FBLP-1B. FBLIM1 serves as an anchoring site for cell-ECM adhesion proteins and filamin-containing actin filaments. It is associated with actin stress fiber at cell-ECM focal adhesion sites. FBLP-1A and FBLP-1B are recruited and localized at actin stress fibers and clustered at cell-ECM adhesion sites through interaction with PLEKHC1. FBLP-1 is localized at actin stress fibers. FBLIM1 is implicated in cell shape modulation (spreading) and motility. FBLIM1 participate in the regulation of filamin-mediated cross-linking and stabilization of actin filaments. It may also regulate the assembly of filamin-containing signaling complexes that control actin assembly. In addition, FBLIM1 is capable of translocating to the nucleus and regulating gene expression. This antibody is a rabbit polyclonal antibody raised against full length human FBLIM1 antigen.

### Applications

Tested applications:	ELISA, WB, IHC
Cited applications:	IF
Species specificity:	Human, Mouse, Rat; other species not tested.
Cited species:	Human
Calculated FBLIM1 MW:	373aa, 41 kDa
Observed FBLIM1 MW:	45-48 kDa
Positive WB detected in	HepG2 cells, HEK-293 cells, HeLa cells, human heart tissue, K-562 cells
Positive IHC detected in	Human lung cancer tissue
Recommended dilution:	WB: 1:500-1:5000 IHC: 1:20-1:200

Application key: WB = Western blotting, IHC = Immunohistochemistry, IF = Immunofluorescence, IP = Immunoprecipitation

### Immunogen information

Immunogen:	Ag3907
GenBank accession number:	BC019895
Gene ID (NCBI):	54751
Full name:	Filamin binding LIM protein 1

### Product information

Purification method:	Antigen affinity purification
Storage:	PBS with 0.02% sodium azide and 50% glycerol pH 7.3. Store at -20°C.