

LIV-1 Polyclonal Antibody

Catalog number: 14236-1-AP

Size: 45 µg/150 µl

Source: Rabbit

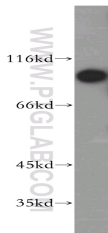
Isotype: IgG

Synonyms:

SLC39A6; LIV 1, LIV1, SLC39A6,

Zinc transporter ZIP6, ZIP 6,

ZIP6, Zrt and Irt like protein 6



HeLa cells were subjected to SDS PAGE followed by western blot with 14236-1-AP (SLC39A6 antibody) at dilution of 1:1000

Applications

Tested applications:	ELISA, WB
Cited applications:	IHC, WB
Species specificity:	Human, Mouse, Rat; other species not tested.
Cited species:	Human
Calculated LIV-1 MW:	85 kDa
Observed LIV-1 MW:	100 kDa
Positive WB detected in:	HeLa cells
Recommended dilution:	WB: 1:500-1:5000

Application key: WB = Western blotting, IHC = Immunohistochemistry, IF = Immunofluorescence, IP = Immunoprecipitation

Immunogen information

Immunogen:	Ag5478
GenBank accession number:	BC039498
Gene ID (NCBI):	25800
Full name:	Solute carrier family 39 (zinc transporter), member 6

Product information

Purification method:	Antigen affinity purification
Storage:	PBS with 0.02% sodium azide and 50% glycerol pH 7.3. Store at -20°C.