

CSRP2 Polyclonal Antibody

Catalog number: 10892-2-AP

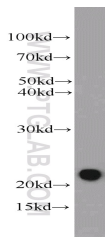
Size: 27 µg/150 µl

Source: Rabbit

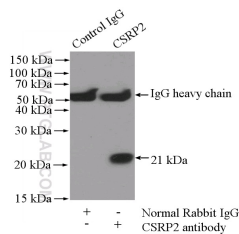
Isotype: IgG

Synonyms:

CSRP2; CRP2, CSRP2, Cysteine rich protein 2, LIM domain only protein 5, LMO 5, LMO5, SmLIM, Smooth muscle cell LIM protein



mouse liver tissue were subjected to SDS PAGE followed by western blot with 10892-2-AP(CSRP2 antibody) at dilution of 1:1000



IP Result of anti-CSRP2 (IP:10892-2-AP, 4µg; Detection:10892-2-AP 1:1000) with mouse liver tissue lysate 4000µg.

Applications

Tested applications:	ELISA, WB, IP
Species specificity:	Human,Mouse,Rat; other species not tested.
Calculated CSRP2 MW:	21 kDa
Observed CSRP2 MW:	21 kDa
Positive WB detected in	Mouse liver tissue, HepG2 cells, human vein tissue, mouse kidney tissue
Positive IP detected in	Mouse liver tissue
Recommended dilution:	WB: 1:500-1:5000 IP: 1:500-1:5000

Application key: WB = Western blotting, IHC = Immunohistochemistry, IF = Immunofluorescence, IP = Immunoprecipitation

Immunogen information

Immunogen:	Ag1338
GenBank accession number:	BC000992
Gene ID (NCBI):	1466
Full name:	Cysteine and glycine-rich protein 2

Product information

Purification method:	Antigen affinity purification
Storage:	PBS with 0.1% sodium azide and 50% glycerol pH 7.3. Store at -20°C.