

## GLRX2 Polyclonal Antibody

Catalog number: 13381-1-AP

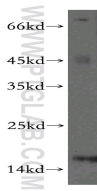
Size: 56 µg/150 µl

Source: Rabbit

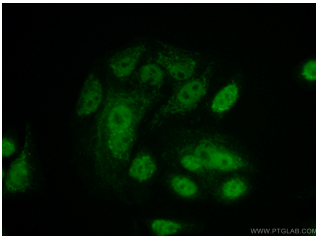
Isotype: IgG

Synonyms:

GLRX2; bA101E13.1, GLRX2,  
Glutaredoxin 2, Glutaredoxin 2,  
mitochondrial, GRX2



A549 cells were subjected to SDS PAGE followed by western blot with 13381-1-AP (GLRX2 antibody) at dilution of 1:200



Immunofluorescent analysis of ( 10% Formaldehyde ) fixed A549 cells using 13381-1-AP ( GLRX2 Antibody ) at dilution of 1:50 and Alexa Fluor 488-conjugated AffiniPure Goat Anti-Rabbit IgG(H+L)

### Background

GLRX2 (Glutaredoxin-2) is also named as GRX2 and belongs to the glutaredoxin family. It facilitates the maintenance of cellular redox homeostasis upon treatment with apoptotic agents, thereby preventing cardiolipin oxidation and cytochrome C release. The GLRX2, which exists in a dynamic equilibrium of enzymatically active monomers and quiescent dimers, is a 16-kDa protein directed either to the nucleus or to the mitochondria through differential splicing of the first exon (PMID: 17121859). It has 2 isoforms produced by alternative splicing.

### Applications

Tested applications:	ELISA, WB, IF
Cited applications:	WB
Species specificity:	Human, Mouse, Rat; other species not tested.
Cited species:	Mouse
Calculated GLRX2 MW:	164aa, 18 kDa
Observed GLRX2 MW:	16 kDa
Positive WB detected in	A549 cells, human heart tissue, mouse heart tissue
Positive IF detected in	A549 cells
Recommended dilution:	WB: 1:200-1:1000 IF: 1:50-1:500

Application key: WB = Western blotting, IHC = Immunohistochemistry, IF = Immunofluorescence, IP = Immunoprecipitation

### Immunogen information

Immunogen:	Ag4218
GenBank accession number:	BC028113
Gene ID (NCBI):	51022
Full name:	Glutaredoxin 2

### Product information

Purification method:	Antigen affinity purification
Storage:	PBS with 0.02% sodium azide and 50% glycerol pH 7.3. Store at -20°C.