

PLAC8 Polyclonal Antibody

Catalog number: 12284-1-AP

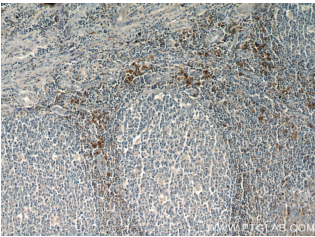
Size: 37 µg/150 µl

Source: Rabbit

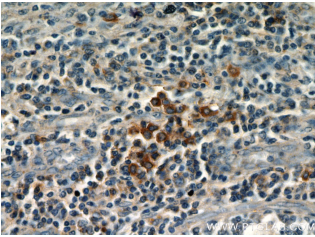
Isotype: IgG

Synonyms:

PLAC8; C15, onzin, PLAC8,
placenta 8, Protein C15



Immunohistochemical of paraffin-embedded human tonsil using 12284-1-AP (PLAC8 antibody) at dilution of 1:50 (under 10x lens)



Immunohistochemical of paraffin-embedded human tonsil using 12284-1-AP (PLAC8 antibody) at dilution of 1:50 (under 40x lens)

Background

PLAC8, also named as Protein C15, is a placenta-specific protein. The expression was downregulated upon activation, particularly in dendritic cells generated in vitro from CD34 (142230) progenitor cells. The MW of PLAC8 is about 12-20kd

Applications

Tested applications:	ELISA, IHC
Species specificity:	Human, Mouse, Rat; other species not tested.
Calculated PLAC8 MW:	12 kDa
Observed PLAC8 MW:	
Positive IHC detected in	Human tonsil tissue, human brain tissue, human placenta tissue, human spleen tissue
Recommended dilution:	IHC: 1:20-1:200

Application key: WB = Western blotting, IHC = Immunohistochemistry, IF = Immunofluorescence, IP = Immunoprecipitation

Immunogen information

Immunogen:	Ag2939
GenBank accession number:	BC012205
Gene ID (NCBI):	51316
Full name:	Placenta-specific 8

Product information

Purification method:	Antigen affinity purification
Storage:	PBS with 0.1% sodium azide and 50% glycerol pH 7.3. Store at -20°C.