

## CISD2 Polyclonal Antibody

Catalog number: 13318-1-AP

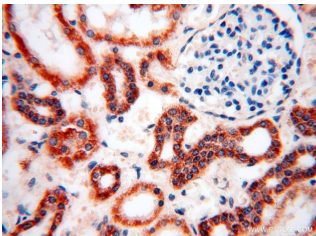
Size: 52 µg/150 µl

Source: Rabbit

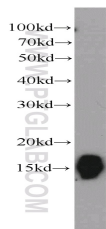
Isotype: IgG

Synonyms:

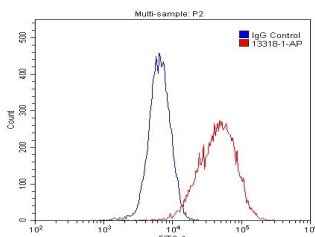
CISD2; CDGSH iron sulfur domain 2, CDGSH2, CISD2, ERIS, Miner1, MitoNEET related 1 protein, NAF 1, WFS2, ZCD2



Immunohistochemical of paraffin-embedded human kidney using 13318-1-AP (CISD2 antibody) at dilution of 1:100 (under 40x lens)



mouse kidney tissue were subjected to SDS PAGE followed by western blot with 13318-1-AP (CISD2 antibody) at dilution of 1:1000



1X10<sup>6</sup> HepG2 cells were stained with 0.2 µg CISD2 antibody (13318-1-AP, red) and control antibody (blue). Fixed with 4% PFA blocked with 3% BSA (30 min). Alexa Fluor 488-conjugated AffiniPure Goat Anti-Rabbit IgG(H+L) with dilution 1:1500.

### Background

CISD2 gene encodes a 15 kDa CDGSH iron-sulfur domain-containing protein 2, which is also named Miner1 or NAF-1, this protein was reported on endoplasmic reticulum membrane or mitochondrion outer membrane. Defects in CISD2 are the cause of Wolfram syndrome type 2 (WFS2), a rare disorder characterized by juvenile-onset insulin-dependent diabetes mellitus with optic atrophy. CISD2 regulates autophagy program by interacting BCL2, contributing to antagonize BECN1-mediated cellular autophagy at the endoplasmic reticulum.

### Applications

Tested applications:	ELISA, WB, IHC, IF, IP, FC
Cited applications:	IHC, WB
Species specificity:	Human, Mouse, Rat; other species not tested.
Cited species:	Drosophila, human, mouse, rat
Calculated CISD2 MW:	135aa, 15 kDa
Observed CISD2 MW:	13-15 kDa
Positive WB detected in	Mouse kidney tissue, HeLa cells, human brain tissue, mouse brain tissue, mouse heart tissue
Positive IP detected in	Mouse brain tissue
Positive IHC detected in	Human kidney tissue, human brain tissue, human lung tissue, human ovary tissue, human pancreas tissue, human spleen tissue, human testis tissue
Positive IF detected in	HepG2 cells
Positive FC detected in	HepG2 cells
Recommended dilution:	WB: 1:500-1:5000 IP: 1:200-1:2000 IHC: 1:20-1:200 IF: 1:20-1:200 FC: N/A

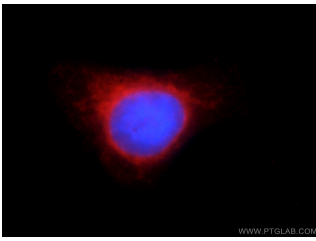
Application key: WB = Western blotting, IHC = Immunohistochemistry, IF = Immunofluorescence, IP = Immunoprecipitation

### Immunogen information

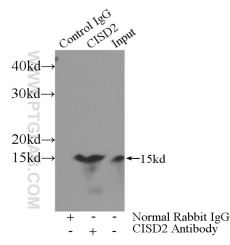
Immunogen:	Ag4172
GenBank accession number:	BC032300
Gene ID (NCBI):	493856
Full name:	CDGSH iron sulfur domain 2

### Product information

Purification method:	Antigen affinity purification
Storage:	PBS with 0.02% sodium azide and 50% glycerol pH 7.3. Store at -20°C.



**Immunofluorescent analysis of HepG2 cells using 13318-1-AP( CISD2 Antibody) at dilution of 1:50 and Rhodamine-Goat anti-Rabbit IgG**



**IP Result of anti-CISD2 (IP:13318-1-AP, 3ug; Detection:13318-1-AP 1:700) with mouse brain tissue lysate 4000ug.**