

WT1 Polyclonal Antibody

Catalog number: 12609-1-AP

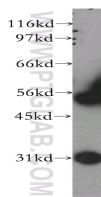
Size: 22 µg/150 µl

Source: Rabbit

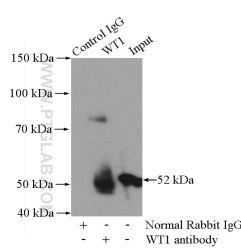
Isotype: IgG

Synonyms:

WT1; GUD, WAGR, Wilms tumor 1, Wilms tumor protein, WIT 2, WT1, WT33



human kidney tissue were subjected to SDS PAGE followed by western blot with 12609-1-AP(WT1 antibody) at dilution of 1:300



IP Result of anti-WT1 (IP:12609-1-AP, 4µg; Detection:12609-1-AP 1:1000) with mouse kidney tissue lysate 4000µg.

Background

The WT1 gene encodes a zinc finger DNA-binding protein that acts as a transcriptional activator or repressor depending on the cellular or chromosomal context, and it is required for normal formation of the genitourinary system and mesothelial tissues. WT1 inhibits apoptosis through p53 and Bcl-2 and also inhibits the differentiation of leukemic cells. Function of WT1 may be isoform-specific: isoforms lacking the KTS motif may act as transcription factors. Isoforms containing the KTS motif may bind mRNA and play a role in mRNA metabolism or splicing. Isoform 1 has lower affinity for DNA, and can bind RNA.

Applications

Tested applications:	ELISA, WB, IP
Species specificity:	Human, Mouse, Rat; other species not tested.
Calculated WT1 MW:	449aa, 49 kDa, 57 kDa
Observed WT1 MW:	52-55kd
Positive WB detected in	Human kidney tissue, A431 cells, human liver tissue, K-562 cells, MCF7 cells, mouse kidney tissue, rat kidney tissue
Positive IP detected in	Mouse kidney tissue
Recommended dilution:	WB: 1:500-1:5000 IP: 1:500-1:5000

Application key: WB = Western blotting, IHC = Immunohistochemistry, IF = Immunofluorescence, IP = Immunoprecipitation

Immunogen information

Immunogen:	Ag3337
GenBank accession number:	BC032861
Gene ID (NCBI):	7490
Full name:	Wilms tumor 1

Product information

Purification method:	Antigen affinity purification
Storage:	PBS with 0.02% sodium azide and 50% glycerol pH 7.3. Store at -20°C.