

ALDH1A2 Polyclonal Antibody

Catalog number: 13951-1-AP

Size: 20 µg/150 µl

Source: Rabbit

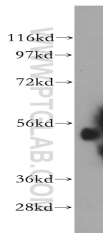
Isotype: IgG

Synonyms:

ALDH1A2; ALDH1A2, RALDH 2,

RALDH(II), RALDH2, RALDH2 T,

Retinal dehydrogenase 2



mouse testis tissue were subjected to SDS PAGE followed by western blot with 13951-1-AP(ALDH1A2 antibody) at dilution of 1:500

Background

ALDH1A2(aldehyde dehydrogenase family 1 member A2) is also named as RALDH2(retinal dehydrogenase 2) and belongs to the aldehyde dehydrogenase family. It is a cytosolic homotetramer(56.7 kDa subunits) exhibiting complex expression patterns throughout embryonic development. ALDH1A2 plays a role in retinoid metabolism during embryonic development where it is considered to be the major retinoic acid-synthesizing enzyme during early embryogenesis(PMID:20735668). Its expression is reduced in primary prostate tumors compared with normal prostate tissue suggested that it is normally expressed in the epithelial compartment of prostate tissue(PMID:16166285).It has 2 isoforms produced by alternative splicing.

Applications

Tested applications:	ELISA, WB
Cited applications:	WB
Species specificity:	Human,Mouse,Rat; other species not tested.
Cited species:	Mouse
Calculated ALDH1A2 MW:	518aa,57kd
Observed ALDH1A2 MW:	53-57kd
Positive WB detected in	Mouse testis tissue, K-562 cells
Recommended dilution:	WB: 1:500-1:5000

Application key: WB = Western blotting, IHC= Immunohistochemistry, IF = Immunofluorescence, IP = Immunoprecipitation

Immunogen information

Immunogen:	Ag5062
GenBank accession number:	BC030589
Gene ID (NCBI):	8854
Full name:	Aldehyde dehydrogenase 1 family, member A2

Product information

Purification method:	Antigen affinity purification
Storage:	PBS with 0.02% sodium azide and 50% glycerol pH 7.3. Store at -20°C.