

CLCNKA Polyclonal Antibody

Catalog number: 14402-1-AP

Size: 36 µg/150 µl

Source: Rabbit

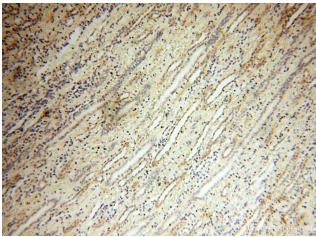
Isotype: IgG

Synonyms:

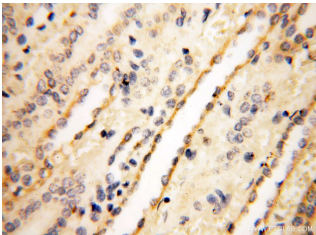
CLCNKA; chloride channel Ka,

CIC K1, CLCK1, CLCNKA, hCIC

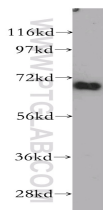
Ka



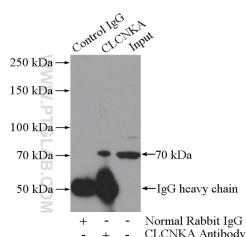
Immunohistochemical of paraffin-embedded human kidney using 14402-1-AP (CLCNKA antibody) at dilution of 1:100 (under 10x lens)



Immunohistochemical of paraffin-embedded human kidney using 14402-1-AP (CLCNKA antibody) at dilution of 1:100 (under 40x lens)



HEK-293 cells were subjected to SDS PAGE followed by western blot with 14402-1-AP (CLCNKA antibody) at dilution of 1:500



IP Result of anti-CLCNKA

(IP:14402-1-AP, 5µg;

Applications

Tested applications:	ELISA, WB, IHC, IP
Species specificity:	Human, Mouse, Rat; other species not tested.
Calculated CLCNKA MW:	75 kDa
Observed CLCNKA MW:	70 kDa
Positive WB detected in	HEK-293 cells, human kidney tissue, mouse pancreas tissue
Positive IP detected in	HEK-293 cells
Positive IHC detected in	Human kidney tissue, human lung tissue, human ovary tissue, human placenta tissue, human skin tissue, human spleen tissue, human testis tissue
Recommended dilution:	WB: 1:500-1:5000 IP: 1:200-1:2000 IHC: 1:20-1:200

Application key: WB = Western blotting, IHC = Immunohistochemistry, IF = Immunofluorescence, IP = Immunoprecipitation

Immunogen information

Immunogen:	Ag5647
GenBank accession number:	BC048282
Gene ID (NCBI):	1187
Full name:	Chloride channel Ka

Product information

Purification method:	Antigen affinity purification
Storage:	PBS with 0.02% sodium azide and 50% glycerol pH 7.3. Store at -20°C.

Detection:14402-1-AP 1:500)
with HEK-293 cells lysate
880ug.