

## TPX2 Polyclonal Antibody

Catalog number: 11741-1-AP

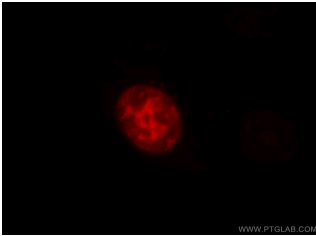
Size: 45 µg/150 µl

Source: Rabbit

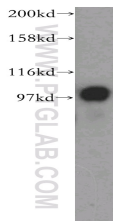
Isotype: IgG

Synonyms:

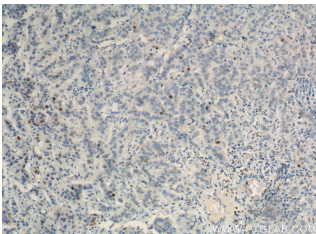
TPX2; C20orf1, C20orf2, DIL 2,  
DIL2, FLS353, GD:C20orf1,  
HCA519, HCTP4, p100, Protein  
fls353, REPP86, Targeting  
protein for Xklp2, TPX2



Immunofluorescent analysis of HepG2 cells, using TPX2 antibody 11741-1-AP at 1:25 dilution and Rhodamine-labeled goat anti-rabbit IgG (red).



HeLa cells were subjected to SDS PAGE followed by western blot with 11741-1-AP(TPX2 antibody) at dilution of 1:500



Immunohistochemistry of paraffin-embedded human prostate cancer tissue slide using 11741-1-AP( TPX2 Antibody) at dilution of 1:200 (under 10x lens). heat mediated antigen retrieved with Tris-EDTA buffer(pH9).

### Applications

Tested applications:	ELISA, WB, IF, IP, IHC
Cited applications:	WB
Species specificity:	Human, Mouse, Rat; other species not tested.
Cited species:	Mouse
Calculated TPX2 MW:	747aa, 86 kDa
Observed TPX2 MW:	100 kDa
Positive WB detected in:	HeLa cells, K-562 cells
Positive IP detected in:	HeLa cells
Positive IHC detected in:	Human prostate cancer tissue
Positive IF detected in:	HepG2 cells
Recommended dilution:	WB: 1:1000-1:10000 IP: 1:200-1:2000 IHC: 1:20-1:200 IF: 1:10-1:100

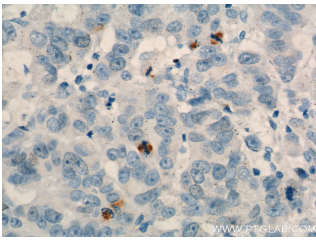
Application key: WB = Western blotting, IHC = Immunohistochemistry, IF = Immunofluorescence, IP = Immunoprecipitation

### Immunogen information

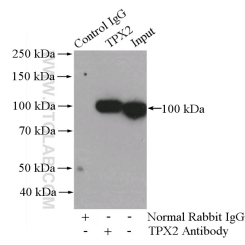
Immunogen:	Ag2334
GenBank accession number:	BC020207
Gene ID (NCBI):	22974
Full name:	TPX2, microtubule-associated, homolog (Xenopus laevis)

### Product information

Purification method:	Antigen affinity purification
Storage:	PBS with 0.1% sodium azide and 50% glycerol pH 7.3. Store at -20°C.



**Immunohistochemistry of paraffin-embedded human prostate cancer tissue slide using 11741-1-AP ( TPX2 Antibody) at dilution of 1:200 (under 40x lens). heat mediated antigen retrieved with Tris-EDTA buffer(pH9).**



**IP Result of anti-TPX2 (IP:11741-1-AP, 4ug; Detection:11741-1-AP 1:800) with HeLa cells lysate 880ug.**