

## Nidogen 2 Polyclonal Antibody

Catalog number: 13530-1-AP

Size: 26 µg/150 µl

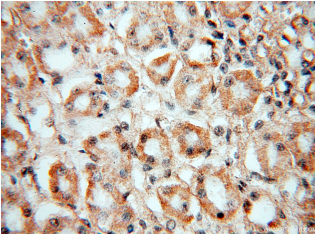
Source: Rabbit

Isotype: IgG

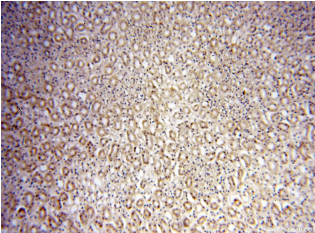
Synonyms:

NID2; NID 2, NID2, Nidogen 2,  
nidogen 2 (osteonidogen),

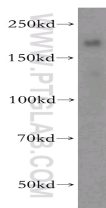
Osteonidogen



Immunohistochemical of paraffin-embedded human kidney using 13530-1-AP(NID2 antibody) at dilution of 1:50 (under 40x lens)



Immunohistochemical of paraffin-embedded human kidney using 13530-1-AP(NID2 antibody) at dilution of 1:50 (under 10x lens)



human placenta tissue were subjected to SDS PAGE followed by western blot with 13530-1-AP(NID2 antibody) at dilution of 1:400

### Applications

Tested applications:	ELISA, WB, IHC
Species specificity:	Human, Mouse, Rat; other species not tested.
Calculated Nidogen 2 MW:	1375aa, 151kd
Observed Nidogen 2 MW:	200kd
Positive WB detected in	Human placenta tissue, human heart tissue
Positive IHC detected in	Human kidney tissue
Recommended dilution:	WB: 1:200-1:2000 IHC: 1:20-1:200

Application key: WB = Western blotting, IHC = Immunohistochemistry, IF = Immunofluorescence, IP = Immunoprecipitation

### Immunogen information

Immunogen:	Ag4424
GenBank accession number:	BC035608
Gene ID (NCBI):	22795
Full name:	Nidogen 2 (osteonidogen)

### Product information

Purification method:	Antigen affinity purification
Storage:	PBS with 0.02% sodium azide and 50% glycerol pH 7.3. Store at -20°C.