

SPAG6 Polyclonal Antibody

Catalog number: 12462-1-AP

Size: 20 µg/150 µl

Source: Rabbit

Isotype: IgG

Synonyms:

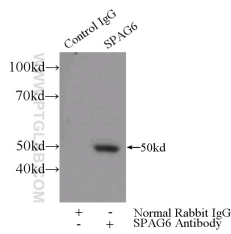
SPAG6; DKFZp434I153, pf16,

Protein PF16 homolog, Repro

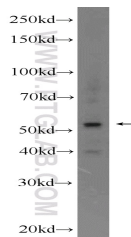
SA 1, SPAG6, sperm associated

antigen 6, Sperm flagellar

protein



IP Result of anti-SPAG6 (IP:12462-1-AP, 3µg; Detection:12462-1-AP 1:300) with mouse testis tissue lysate 4000µg.



mouse testis tissue were subjected to SDS PAGE followed by western blot with 12462-1-AP(SPAG6 Antibody) at dilution of 1:300

Background

Sperm-associated antigen 6 (SPAG6) is an axonemal protein ubiquitously expressed in tissues containing ciliated cells. SPAG6 is essential for sperm motility and fertility. As a novel cancer-testis antigen, SPAG6 is overexpressed in myeloid malignancies. Recently, SPAG6 has been found to negatively regulate neuronal migration during mouse brain development.

Applications

Tested applications:	ELISA, IP, WB
Cited applications:	IF, WB
Species specificity:	Human, Mouse, Rat; other species not tested.
Cited species:	Mouse
Calculated SPAG6 MW:	458aa, 50 kDa
Observed SPAG6 MW:	50-55 kDa
Positive WB detected in	Mouse testis tissue, Jurkat cells, PC-3 cells
Positive IP detected in	Mouse testis tissue
Recommended dilution:	WB: 1:200-1:1000 IP: 1:200-1:1000

Application key: WB = Western blotting, IHC = Immunohistochemistry, IF = Immunofluorescence, IP = Immunoprecipitation

Immunogen information

Immunogen:	Ag3130
GenBank accession number:	BC030585
Gene ID (NCBI):	9576
Full name:	Sperm associated antigen 6

Product information

Purification method:	Antigen affinity purification
Storage:	PBS with 0.1% sodium azide and 50% glycerol pH 7.3. Store at -20°C.