

KHDRBS3 Polyclonal Antibody

Catalog number: 13563-1-AP

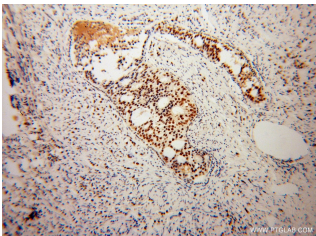
Size: 33 µg/150 µl

Source: Rabbit

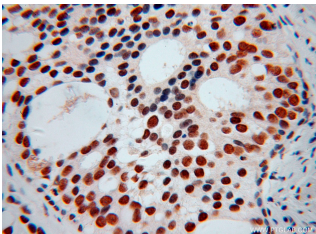
Isotype: IgG

Synonyms:

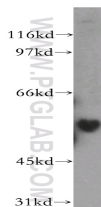
KHDRBS3; Etle, etoile, KHDRBS3, RNA binding protein T Star, SALP, Sam68 like mammalian protein 2, SLM 2, SLM2, T STAR, TSTAR



Immunohistochemical of paraffin-embedded human gliomas using 13563-1-AP (KHDRBS3 antibody) at dilution of 1:100 (under 10x lens)



Immunohistochemical of paraffin-embedded human gliomas using 13563-1-AP (KHDRBS3 antibody) at dilution of 1:100 (under 40x lens)



HepG2 cells were subjected to SDS PAGE followed by western blot with 13563-1-AP (KHDRBS3 antibody) at dilution of 1:300

Background

KH domain-containing, RNA-binding, signal transduction-associated protein 3 (KHDRBS3, SLM2) is a RNA-binding protein that plays a role in the regulation of alternative splicing and influences mRNA splice site selection and exon inclusion (15901763). May play a role as a negative regulator of cell growth. Inhibits cell proliferation. Involved in splice site selection of vascular endothelial growth factor. Induces an increased concentration-dependent incorporation of exon in CD44 pre-mRNA by direct binding to purine-rich exonic enhancer. RNA-binding abilities are down-regulated by tyrosine kinase PTK6. Involved in post-transcriptional regulation of HIV-1 gene expression (11741900). Ubiquitous with higher expression in testis, skeletal muscle and brain. Expressed in the kidney only in podocytes, the glomerular epithelial cells of the kidney. Strongly expressed after meiosis. This antibody is a rabbit polyclonal antibody raised against a full-length human KHDRBS3 protein. The observed molecular weight of KHDRBS is about 55kd.

Applications

Tested applications:	ELISA, WB, IHC
Cited applications:	IHC, WB
Species specificity:	Human, Mouse, Rat; other species not tested.
Cited species:	Human, mouse
Calculated KHDRBS3 MW:	346aa, 38.8 kDa
Observed KHDRBS3 MW:	55 kDa
Positive WB detected in	HepG2 cells, A549 cells, human brain tissue, mouse brain tissue
Positive IHC detected in	Human gliomas tissue
Recommended dilution:	WB: 1:500-1:5000 IHC: 1:20-1:200

Application key: WB = Western blotting, IHC = Immunohistochemistry, IF = Immunofluorescence, IP = Immunoprecipitation

Immunogen information

Immunogen:	Ag4438
GenBank accession number:	BC032606
Gene ID (NCBI):	10656
Full name:	KH domain containing, RNA binding, signal transduction associated 3

Product information

Purification method:	Antigen affinity purification
Storage:	PBS with 0.02% sodium azide and 50% glycerol pH 7.3. Store at -20°C.