

## TULP3 Polyclonal Antibody

Catalog number: 13637-1-AP

Size: 27 µg/150 µl

Source: Rabbit

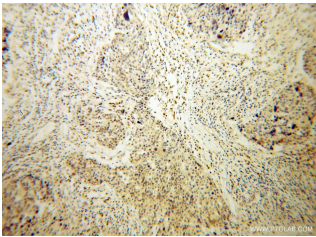
Isotype: IgG

Synonyms:

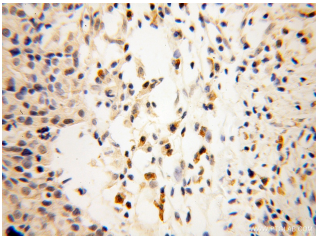
TULP3; tubby like protein 3,

Tubby related protein 3,

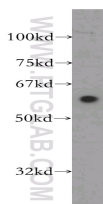
TUBL3, TULP3



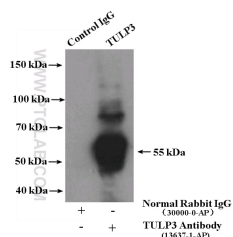
Immunohistochemical of paraffin-embedded human ovary tumor using 13637-1-AP(TULP3 antibody) at dilution of 1:100 (under 10x lens)



Immunohistochemical of paraffin-embedded human ovary tumor using 13637-1-AP(TULP3 antibody) at dilution of 1:100 (under 40x lens)



SH-SY5Y cells were subjected to SDS PAGE followed by western blot with 13637-1-AP(TULP3 antibody) at dilution of 1:800



IP Result of anti-TULP3

(IP:13637-1-AP, 4µg;

### Background

The tubby-like protein 3 (Tulp3) has been identified as a member of tubby and tubby-like proteins (TULPs) that plays an important role in maintenance and function of neuronal cells during development and post-differentiation. Tulp3 gene is essential for embryonic development in mice. Recently TULP3 has been reported to bind to the IFT(intraflagellar transport)-A complex and promote trafficking of G protein-coupled receptors into primary cilia, which is implicated in regulating neuronal function.

### Applications

Tested applications:	ELISA, WB, IHC, IP
Species specificity:	Human, Mouse, Rat; other species not tested.
Calculated TULP3 MW:	442aa, 50 kDa
Observed TULP3 MW:	60 kDa
Positive WB detected in:	SH-SY5Y cells
Positive IP detected in:	SH-SY5Y cells
Positive IHC detected in:	Human ovary tumor tissue
Recommended dilution:	WB: 1:500-1:5000
	IP: 1:200-1:2000
	IHC: 1:20-1:200

Application key: WB = Western blotting, IHC = Immunohistochemistry, IF = Immunofluorescence, IP = Immunoprecipitation

### Immunogen information

Immunogen:	Ag4570
GenBank accession number:	BC032587
Gene ID (NCBI):	7289
Full name:	Tubby like protein 3

### Product information

Purification method:	Antigen affinity purification
Storage:	PBS with 0.02% sodium azide and 50% glycerol pH 7.3. Store at -20°C.

Detection:13637-1-AP 1:800)  
with SH-SY5Y cells lysate  
1600ug.