

TLK2 Polyclonal Antibody

Catalog number: 13979-1-AP

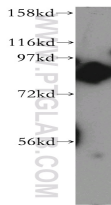
Size: 26 µg/150 µl

Source: Rabbit

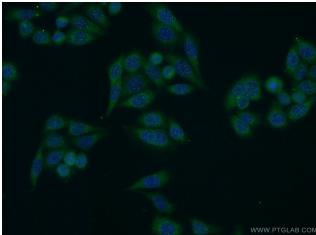
Isotype: IgG

Synonyms:

TLK2; PKU ALPHA, TLK2,
tousled like kinase 2



HeLa cells were subjected to SDS PAGE followed by western blot with 13979-1-AP (TLK2 antibody) at dilution of 1:800



Immunofluorescent analysis of HeLa cells using 13979-1-AP (TLK2 Antibody) at dilution of 1:50 and Alexa Fluor 488-conjugated AffiniPure Goat Anti-Rabbit IgG(H+L)

Applications

Tested applications:	ELISA, WB, IF
Species specificity:	Human, Mouse, Rat; other species not tested.
Calculated TLK2 MW:	772aa, 88 kDa
Observed TLK2 MW:	85 kDa
Positive WB detected in:	HeLa cells, MCF7 cells
Positive IF detected in:	HeLa cells
Recommended dilution:	WB: 1:500-1:5000 IF: 1:20-1:200

Application key: WB = Western blotting, IHC = Immunohistochemistry, IF = Immunofluorescence, IP = Immunoprecipitation

Immunogen information

Immunogen:	Ag5022
GenBank accession number:	BC044925
Gene ID (NCBI):	11011
Full name:	Tousled-like kinase 2

Product information

Purification method:	Antigen affinity purification
Storage:	PBS with 0.02% sodium azide and 50% glycerol pH 7.3. Store at -20°C.