

Galectin-1 Polyclonal Antibody

Catalog number: 11858-1-AP

Size: 55 µg/150 µl

Source: Rabbit

Isotype: IgG

Synonyms:

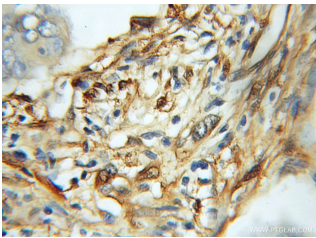
LGALS1; 14 kDa laminin binding protein, 14 kDa lectin,

DKFZp686E23103, Gal 1, GAL1,

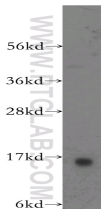
Galaptin, Galectin 1, Galectin-1,

HBL, HLBP14, HPL, Lactose

binding lectin 1, LGALS1, S Lac lectin 1



Immunohistochemical of paraffin-embedded human colon cancer using 11858-1-AP(GAL1, LGALS1 antibody) at dilution of 1:100 (under 10x lens)



human liver tissue were subjected to SDS PAGE followed by western blot with 11858-1-AP(GAL1, LGALS1 antibody) at dilution of 1:500

Background

Galectins are a family of animal lectins defined by shared characteristic amino-acid sequences and affinity for β-galactose-containing oligosaccharides (PMID: 8063692). Galectin-1 contains one carbohydrate recognition domain (CRD) and occurs as a monomer as well as a non-covalent homodimer (PMID: 16840800). It is differentially expressed by various normal and pathological tissues. Galectin-1 is a multifunctional protein that is involved in cell adhesion, migration, proliferation, apoptosis, inflammation, tumour transformation and growth (PMID:15785741).

Applications

Tested applications:	ELISA, WB, IHC
Cited applications:	WB
Species specificity:	Human, Mouse, Rat; other species not tested.
Cited species:	Human
Calculated Galectin-1 MW:	15 kDa
Observed Galectin-1 MW:	15 kDa
Positive WB detected in	Human liver tissue, human heart tissue
Positive IHC detected in	Human colon cancer tissue, human lung cancer tissue
Recommended dilution:	WB: 1:500-1:5000 IHC: 1:20-1:200

Application key: WB = Western blotting, IHC = Immunohistochemistry, IF = Immunofluorescence, IP = Immunoprecipitation

Immunogen information

Immunogen:	Ag2432
GenBank accession number:	BC020675
Gene ID (NCBI):	3956
Full name:	Lectin, galactoside-binding, soluble, 1

Product information

Purification method:	Antigen affinity purification
Storage:	PBS with 0.1% sodium azide and 50% glycerol pH 7.3. Store at -20°C.