

TIN2 Polyclonal Antibody

Catalog number: 11368-1-AP

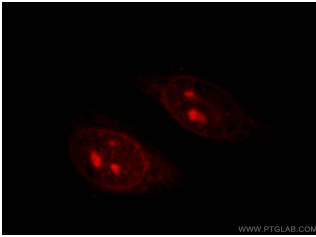
Size: 58 µg/150 µl

Source: Rabbit

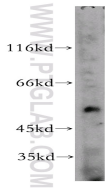
Isotype: IgG

Synonyms:

TINF2; TIN2, TIN2L, TIN2



Immunofluorescent analysis of HepG2 cells, using TINF2 antibody 11368-1-AP at 1:25 dilution and Rhodamine-labeled goat anti-rabbit IgG (red).



mouse spleen tissue were subjected to SDS PAGE followed by western blot with 11368-1-AP(TIN2 antibody) at dilution of 1:200

Background

TIN2, also named as TINF2, is a component of the shelterin complex (telosome) that is involved in the regulation of telomere length and protection. TIN2 has some isoforms with MW 50 kDa (TIN2L), 40 kDa (TIN2S) and 13 kDa. This antibody detects TIN2L, TIN2S and the shelterin complex.

Applications

Tested applications:	ELISA, WB, IF
Species specificity:	Human, Mouse; other species not tested.
Calculated TIN2 MW:	451aa,50 kDa
Observed TIN2 MW:	50 kDa; 40 kDa
Positive WB detected in	Mouse spleen tissue
Positive IF detected in	HepG2 cells
Recommended dilution:	WB: 1:200-1:2000 IF: 1:10-1:100

Application key: WB = Western blotting, IHC = Immunohistochemistry, IF = Immunofluorescence, IP = Immunoprecipitation

Immunogen information

Immunogen:	Ag1922
GenBank accession number:	BC005030
Gene ID (NCBI):	26277
Full name:	TERF1 (TRF1)-interacting nuclear factor 2

Product information

Purification method:	Antigen affinity purification
Storage:	PBS with 0.02% sodium azide and 50% glycerol pH 7.3. Store at -20°C.