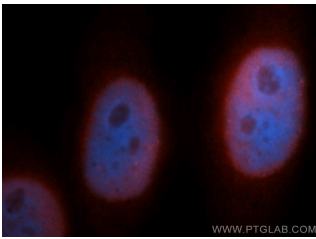
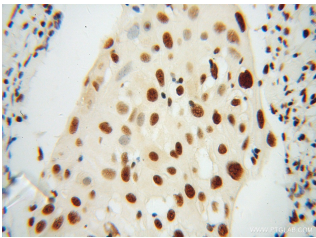


## SNRPB2 Polyclonal Antibody

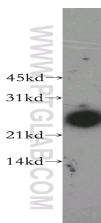
Catalog number: 13512-1-AP  
Size: 37 µg/150 µl  
Source: Rabbit  
Isotype: IgG  
Synonyms:  
SNRPB2; SNRPB2, U2 snRNP B



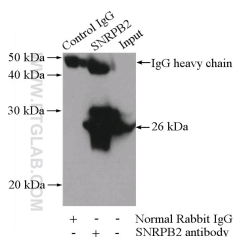
Immunofluorescent analysis of HeLa cells, using SNRPB2 antibody 13512-1-AP at 1:50 dilution and Rhodamine-labeled goat anti-rabbit IgG (red). Blue pseudocolor = DAPI (fluorescent DNA dye).



Immunohistochemical of paraffin-embedded human cervical cancer using 13512-1-AP (SNRPB2 antibody) at dilution of 1:100 (under 40x lens)



HeLa cells were subjected to SDS PAGE followed by western blot with 13512-1-AP (SNRPB2 antibody) at dilution of 1:500



IP Result of anti-SNRPB2  
(IP:13512-1-AP, 4µg;  
Detection:13512-1-AP 1:1000)

### Background

U2 small nuclear ribonucleoprotein B''(SNRPB2) is part of the U2 RNP particle, which associated with the branch point of the lariat-shaped intron, in intermediate in the cascade of mRNA precursor splicing event. Only in presence of the U2A' protein, SNRPB2 binds stem loop IV of U2 snRNA.

### Applications

Tested applications:	ELISA, WB, IHC, IF, IP
Cited applications:	IHC, WB
Species specificity:	Human, Mouse, Rat; other species not tested.
Cited species:	Human
Calculated SNRPB2 MW:	225aa, 26.5 kDa
Observed SNRPB2 MW:	26.5kd
Positive WB detected in	HeLa cells, human brain tissue, human kidney tissue, human liver tissue, mouse liver tissue
Positive IP detected in	Mouse liver tissue
Positive IHC detected in	Human cervical cancer tissue
Positive IF detected in	HeLa cells
Recommended dilution:	WB: 1:1000-1:10000 IP: 1:500-1:5000 IHC: 1:20-1:200 IF: 1:20-1:200

Application key: WB = Western blotting, IHC = Immunohistochemistry, IF = Immunofluorescence, IP = Immunoprecipitation

### Immunogen information

Immunogen:	Ag4436
GenBank accession number:	BC036737
Gene ID (NCBI):	6629
Full name:	Small nuclear ribonucleoprotein polypeptide B''

### Product information

Purification method:	Antigen affinity purification
Storage:	PBS with 0.02% sodium azide and 50% glycerol pH 7.3. Store at -20°C.

with mouse liver tissue lysate  
4000ug.