

GUCY1A3 Polyclonal Antibody

Catalog number: 12605-1-AP

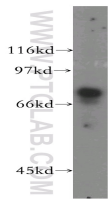
Size: 39 µg/150 µl

Source: Rabbit

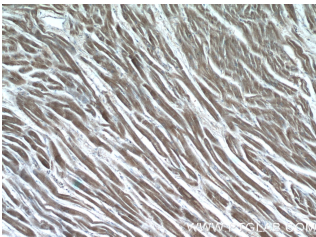
Isotype: IgG

Synonyms:

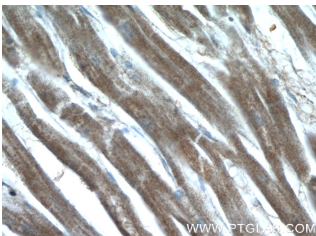
GUCY1A3; GC SA3, GCS alpha 1, GCS alpha 3, GUC1A3, GUCA3, GUCSA3, GUCY1A1, GUCY1A3



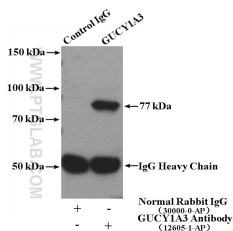
human brain tissue were subjected to SDS PAGE followed by western blot with 12605-1-AP(GUCY1A3 antibody) at dilution of 1:400



Immunohistochemistry of paraffin-embedded human heart tissue slide using 12605-1-AP(GUCY1A3 Antibody) at dilution of 1:50 (under 10x lens)



Immunohistochemistry of paraffin-embedded human heart tissue slide using 12605-1-AP(GUCY1A3 Antibody) at dilution of 1:50 (under 40x lens)



Applications

Tested applications:	ELISA, WB, IHC, IP
Species specificity:	Human, Mouse, Rat; other species not tested.
Calculated GUCY1A3 MW:	690aa, 77 kDa
Observed GUCY1A3 MW:	77 kDa
Positive WB detected in	Human brain tissue, human cerebellum tissue, human kidney tissue, mouse lung tissue
Positive IP detected in	Mouse lung tissue
Positive IHC detected in	Human heart tissue
Recommended dilution:	WB: 1:500-1:5000 IP: 1:200-1:2000 IHC: 1:20-1:200

Application key: WB = Western blotting, IHC = Immunohistochemistry, IF = Immunofluorescence, IP = Immunoprecipitation

Immunogen information

Immunogen:	Ag3293
GenBank accession number:	BC028384
Gene ID (NCBI):	2982
Full name:	Guanylate cyclase 1, soluble, alpha 3

Product information

Purification method:	Antigen affinity purification
Storage:	PBS with 0.1% sodium azide and 50% glycerol pH 7.3. Store at -20°C.

IP Result of anti-GUCY1A3
(IP:12605-1-AP, 4ug;
Detection:12605-1-AP 1:500)
with mouse lung tissue lysate
3600ug.