

## NRF1/nuclear respiratory factor 1 Polyclonal Antibody

Catalog number: 12482-1-AP

Size: 28 µg/150 µl

Source: Rabbit

Isotype: IgG

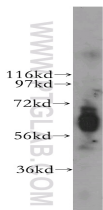
Synonyms:

NRF1; ALPHA PAL, NRF 1,

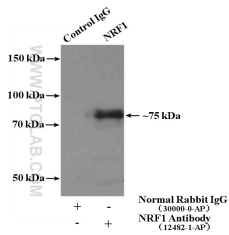
NRF1, NRF1/nuclear

respiratory factor 1, nuclear

respiratory factor 1



mouse skeletal muscle tissue were subjected to SDS PAGE followed by western blot with 12482-1-AP(NRF1 antibody) at dilution of 1:400



IP Result of anti-NRF1 (IP:12482-1-AP, 4µg; Detection:12482-1-AP 1:300) with mouse skeletal muscle tissue lysate 3000µg.

### Background

NRF1, also named as Alpha-pal and NRF-1, belongs to the NRF1/Ewg family. It is a transcription factor that activates the expression of the EIF2S1 (EIF2-alpha) gene. NRF1 is implicated in the control of nuclear genes required for respiration, heme biosynthesis, and mitochondrial DNA transcription and replication. It plays a critical role in regulating the expression of many antioxidant response element (ARE)-dependent genes.

### Applications

Tested applications:	ELISA, WB, IP
Cited applications:	ChIP, IF, WB
Species specificity:	Human, Mouse, Rat; other species not tested.
Cited species:	Human, mouse
Calculated NRF1/nuclear respiratory factor 1 MW:	522aa, 56 kDa
Observed NRF1/nuclear respiratory factor 1 MW:	67 kDa
Positive WB detected in	Mouse skeletal muscle tissue, human lung tissue
Positive IP detected in	Mouse skeletal muscle tissue
Recommended dilution:	WB: 1:500-1:5000 IP: 1:200-1:1000

Application key: WB = Western blotting, IHC = Immunohistochemistry, IF = Immunofluorescence, IP = Immunoprecipitation

### Immunogen information

Immunogen:	Ag3172
GenBank accession number:	BC016925
Gene ID (NCBI):	4899
Full name:	Nuclear respiratory factor 1

### Product information

Purification method:	Antigen affinity purification
Storage:	PBS with 0.02% sodium azide and 50% glycerol pH 7.3. Store at -20°C.