

DVL3 Polyclonal Antibody

Catalog number: 13444-1-AP

Size: 46 µg/150 µl

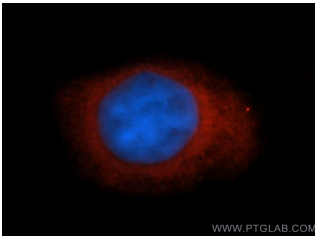
Source: Rabbit

Isotype: IgG

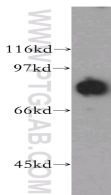
Synonyms:

DVL3; Dishevelled 3, DSH

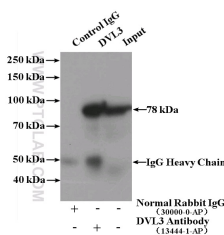
homolog 3, DVL3, KIAA0208



Immunofluorescent analysis of HeLa cells, using SFRS17A antibody 13444-1-AP at 1:50 dilution and Rhodamine-labeled goat anti-rabbit IgG (red). Blue pseudocolor = DAPI (fluorescent DNA dye).



A431 cells were subjected to SDS PAGE followed by western blot with 13444-1-AP (DVL3 antibody) at dilution of 1:300



IP Result of anti-DVL3 (IP:13444-1-AP, 4ug; Detection:13444-1-AP 1:500) with Raji cells lysate 1440ug.

Applications

Tested applications:	ELISA, WB, IF, IP
Cited applications:	WB
Species specificity:	Human, Mouse, Rat; other species not tested.
Cited species:	Human
Calculated DVL3 MW:	716aa, 78 kDa
Observed DVL3 MW:	78 kDa
Positive WB detected in:	A431 cells, A549 cells, MCF7 cells, Raji cells
Positive IP detected in:	Raji cells
Positive IF detected in:	Hela cells
Recommended dilution:	WB: 1:200-1:1000 IP: 1:200-1:2000 IF: 1:20-1:200

Application key: WB = Western blotting, IHC = Immunohistochemistry, IF = Immunofluorescence, IP = Immunoprecipitation

Immunogen information

Immunogen:	Ag4272
GenBank accession number:	BC032459
Gene ID (NCBI):	1857
Full name:	Dishevelled, dsh homolog 3 (Drosophila)

Product information

Purification method:	Antigen affinity purification
Storage:	PBS with 0.02% sodium azide and 50% glycerol pH 7.3. Store at -20°C.