

## PLK1 Polyclonal Antibody

Catalog number: 10305-1-AP

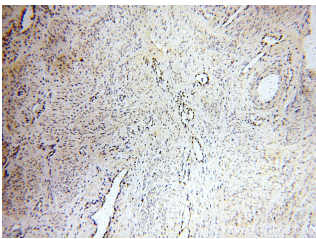
Size: 24 µg/150 µl

Source: Rabbit

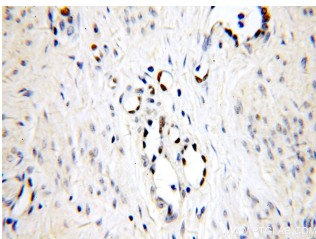
Isotype: IgG

Synonyms:

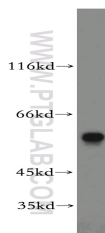
PLK1; PLK, PLK 1, PLK1, Polo like kinase 1, STPK13



Immunohistochemical of paraffin-embedded human cervical cancer using 10305-1-AP (PLK1 antibody) at dilution of 1:50 (under 10x lens)



Immunohistochemical of paraffin-embedded human cervical cancer using 10305-1-AP (PLK1 antibody) at dilution of 1:50 (under 40x lens)



A375 cells were subjected to SDS PAGE followed by western blot with 10305-1-AP (PLK1 antibody) at dilution of 1:1000

### Background

PLK1, also named as PLK and STPK13, belongs to the protein kinase superfamily, Ser/Thr protein kinase family and CDC5/Polo subfamily. PLK1 is a Serine/threonine-protein kinase that performs several important functions throughout M phase of the cell cycle, including the regulation of centrosome maturation and spindle assembly, the removal of cohesins from chromosome arms, the inactivation of APC/C inhibitors, and the regulation of mitotic exit and cytokinesis.

### Applications

Tested applications:	ELISA, IHC, WB
Species specificity:	Human, Mouse, Rat; other species not tested.
Calculated PLK1 MW:	68 kDa
Observed PLK1 MW:	62 kDa
Positive WB detected in	A375 cells, COLO 320 cells, MDA-MB-453s cells
Positive IHC detected in	Human cervical cancer tissue, human placenta tissue
Recommended dilution:	WB: 1:500-1:5000 IHC: 1:20-1:200

Application key: WB = Western blotting, IHC = Immunohistochemistry, IF = Immunofluorescence, IP = Immunoprecipitation

### Immunogen information

Immunogen:	Ag0284
GenBank accession number:	BC002369
Gene ID (NCBI):	5347
Full name:	Polo-like kinase 1 (Drosophila)

### Product information

Purification method:	Antigen affinity purification
Storage:	PBS with 0.1% sodium azide and 50% glycerol pH 7.3. Store at -20°C.