

EXT2 Polyclonal Antibody

Catalog number: 11348-1-AP

Size: 21 µg/150 µl

Source: Rabbit

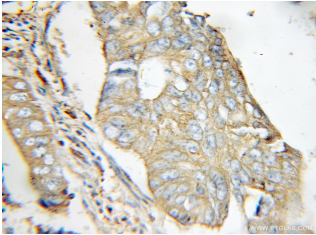
Isotype: IgG

Synonyms:

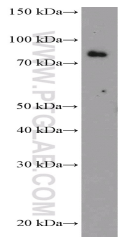
EXT2; exostoses (multiple) 2,

Exostosis 2, EXT2, Multiple

exostoses protein 2, SOTV



Immunohistochemical of paraffin-embedded human colon cancer using 11348-1-AP(EXT2 antibody) at dilution of 1:50 (under 10x lens)



NIH/3T3 cells were subjected to SDS PAGE followed by western blot with 11348-1-AP(EXT2 Antibody) at dilution of 1:1000

Applications

Tested applications:	ELISA, IHC, WB
Species specificity:	Human, Mouse, Rat; other species not tested.
Calculated EXT2 MW:	718aa, 82 kDa
Observed EXT2 MW:	70-82kd
Positive WB detected in	NIH/3T3 cells, C6 cells, Jurkat cells, U-937 cells
Positive IHC detected in	Human colon cancer tissue
Recommended dilution:	WB: 1:500-1:5000 IHC: 1:20-1:200

Application key: WB = Western blotting, IHC = Immunohistochemistry, IF = Immunofluorescence, IP = Immunoprecipitation

Immunogen information

Immunogen:	Ag1748
GenBank accession number:	BC010058
Gene ID (NCBI):	2132
Full name:	Exostoses (multiple) 2

Product information

Purification method:	Antigen affinity purification
Storage:	PBS with 0.1% sodium azide and 50% glycerol pH 7.3. Store at -20°C.