



IBT BIOSERVICES

4 Research Court, Suite 300
Rockville, MD 20850
877-411-2041
Services@ibtbioservices.com

Recombinant Ebola Virus Soluble Glycoprotein (EBOV sGP)

Catalog #: 0565-001

Lot #: 1605011

Description: Mature, recombinant Ebola Virus Soluble Glycoprotein (EBOV sGP) containing a c-terminal HIS tag, is supplied as purified protein. EBOV sGP is produced in mammalian cells and is purified by FPLC.

Storage: 2-3 weeks at -20°C, -80°C long term.

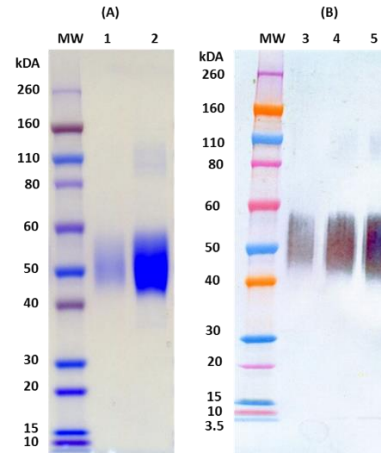
Size: 100 µg of protein is supplied in PBS (supplemented with glycerol, arginine and glutamic acid) at a concentration of **1.943 mg/mL**. The theoretical molecular weight of the protein is ~43 kDa. Because of the glycosylated nature of this protein, migration in an SDS-PAGE gel is slowed resulting in a broad, diffuse band representing differing glycosylation forms.

Relevance: Recombinant glycoprotein provides a means for antibody development, control protein for testing, and a tool to enhance research.

Western Blot: Quality control testing demonstrates strong detection of soluble GP under reduced conditions down to 50 ng when using IBT's Rabbit anti-EBOV sGP polyclonal antibody (cat 365-001) at 0.1 µg/mL.

Related Products: IBT provides a wide array of anti-filovirus specific antibodies and other infectious disease reagents. Please see our website, www.ibtbioservices.com for more details.

SDS-PAGE & Western Blot Detection



(A) SDS-PAGE and stain demonstrating 1 µg, 5 µg (lane 1 and 2 respectively) of EBOV sGP protein under denaturing and reducing conditions. MW denotes Novex Sharp prestained protein markers. (B) Western blot detection of EBOV sGP at 50 ng, 100 ng, and 200 ng (lanes 3-5 respectively). EBOV sGP was detected using IBT's Rabbit anti-EBOV sGP polyclonal antibody at 0.1 µg/mL and anti-rabbit IgG-HRP conjugate, followed by TMB substrate.

ELISA Data

EBOV sGP (ng/well)	OD 650 nm
400.00	3.826
200.00	3.839
100.00	3.628
50.00	3.408
25.00	3.082
12.50	2.423
6.25	1.734
3.13	1.119
1.56	0.658
0.78	0.401
0.39	0.309
0.20	0.183

Plate was coated with EBOV sGP starting at 400 ng/well, serially diluted in DPBS. Washed plate was detected using one dilution of a Rabbit anti-EBOV sGP followed with anti-IgG HRP conjugate and TMB substrate. OD₆₅₀ is reported.

Intended for research use only, not for human, therapeutic, or diagnostic applications.

The buyer cannot sell or otherwise transfer this product for Commercial Purposes without written approval of Integrated BioTherapeutics, Inc.

Copyright 2016. Integrated BioTherapeutics, Inc. All rights reserved.