

## PTGR1 Polyclonal Antibody

Catalog number: 13374-1-AP

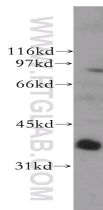
Size: 35 µg/150 µl

Source: Rabbit

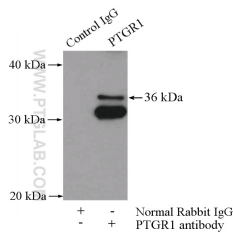
Isotype: IgG

Synonyms:

PTGR1; FLJ99229, LTB4DH,  
PGR1, PRG 1, prostaglandin  
reductase 1, PTGR1, ZADH3



human liver tissue were subjected to SDS PAGE followed by western blot with 13374-1-AP (PTGR1 antibody) at dilution of 1:500



IP Result of anti-PTGR1 (IP:13374-1-AP, 4µg; Detection:13374-1-AP 1:500) with HepG2 cells lysate 3200µg.

### Background

PTGR1 (Prostaglandin reductase 1) is also named as LTB4DH (NADP-dependent leukotriene B4 12-hydroxydehydrogenase) and belongs to the NADP-dependent oxidoreductase L4BD family. It catalyses the conversion of leukotriene B4 into its biologically less reactive metabolite 12-oxo-leukotriene B4, a key step for its inactivation and it is a key oxidation step in the process of metabolic inactivation of leukotriene B(4) in various non-leukocyte tissues (PMID:8576264).

### Applications

Tested applications:	ELISA, WB, IP
Cited applications:	WB
Species specificity:	Human, Mouse, Rat; other species not tested.
Cited species:	Human
Calculated PTGR1 MW:	329aa, 36 kDa
Observed PTGR1 MW:	36 kDa
Positive WB detected in	Human liver tissue, HeLa cells, human colon tissue
Positive IP detected in	HepG2 cells
Recommended dilution:	WB: 1:500-1:5000 IP: 1:200-1:2000

Application key: WB = Western blotting, IHC = Immunohistochemistry, IF = Immunofluorescence, IP = Immunoprecipitation

### Immunogen information

Immunogen:	Ag4196
GenBank accession number:	BC035228
Gene ID (NCBI):	22949
Full name:	Prostaglandin reductase 1

### Product information

Purification method:	Antigen affinity purification
Storage:	PBS with 0.02% sodium azide and 50% glycerol pH 7.3. Store at -20°C.