

## ELL2 Polyclonal Antibody

Catalog number: 12727-1-AP

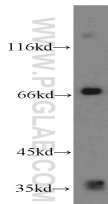
Size: 52 µg/150 µl

Source: Rabbit

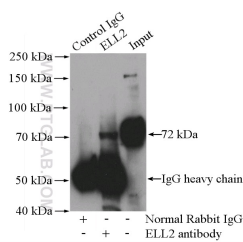
Isotype: IgG

Synonyms:

ELL2; ELL2



mouse brain tissue were subjected to SDS PAGE followed by western blot with 12727-1-AP(ELL2 antibody) at dilution of 1:400



IP Result of anti-ELL2 (IP:12727-1-AP, 4µg; Detection:12727-1-AP 1:300) with mouse brain tissue lysate 3440µg.

### Applications

Tested applications:	ELISA, WB, IP
Cited applications:	WB
Species specificity:	Human,Mouse,Rat; other species not tested.
Cited species:	Mouse
Calculated ELL2 MW:	640aa,72 kDa
Observed ELL2 MW:	72 kDa
Positive WB detected in	Mouse brain tissue, mouse stomach tissue
Positive IP detected in	Mouse brain tissue
Recommended dilution:	WB: 1:200-1:2000 IP: 1:200-1:1000

Application key: WB = Western blotting, IHC = Immunohistochemistry, IF = Immunofluorescence, IP = Immunoprecipitation

### Immunogen information

Immunogen:	Ag3428
GenBank accession number:	BC028412
Gene ID (NCBI):	22936
Full name:	Elongation factor, RNA polymerase II, 2

### Product information

Purification method:	Antigen affinity purification
Storage:	PBS with 0.02% sodium azide and 50% glycerol pH 7.3. Store at -20°C.