

## WSB2 Polyclonal Antibody

Catalog number: 12124-2-AP

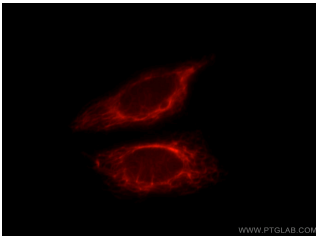
Size: 23 µg/150 µl

Source: Rabbit

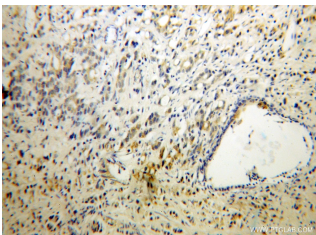
Isotype: IgG

Synonyms:

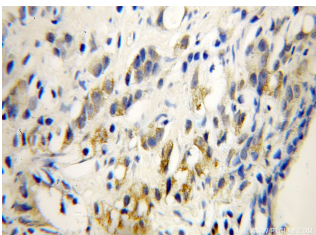
WSB2; CS box containing WD protein, SBA2, WSB 2, WSB2



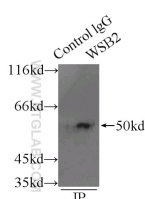
Immunofluorescent analysis of HepG2 cells, using WSB2 antibody 12124-2-AP at 1:25 dilution and Rhodamine-labeled goat anti-rabbit IgG (red).



Immunohistochemical of paraffin-embedded human prostate cancer using 12124-2-AP (WSB2 antibody) at dilution of 1:50 (under 10x lens)



Immunohistochemical of paraffin-embedded human prostate cancer using 12124-2-AP (WSB2 antibody) at dilution of 1:50 (under 40x lens)



IP Result of anti-WSB2  
(IP:12124-2-AP, 3µg;

### Background

WSB2, also named SBA2, encodes WD repeat and SOCS box-containing protein 2. WSB2 may be a substrate-recognition component of an E3 ubiquitin ligase complex which mediates the ubiquitination and subsequent proteasomal degradation of target proteins. WSB2 is a novel protein supposed to be involved in male- and female-specific gonadal development, and also a regulator of IL-21 receptor expression and IL21-induced signal transduction. WSB2 might be a promising novel biomarker of cell differentiation in colorectal cancer and its biological functions need further studies.

### Applications

Tested applications:	ELISA, WB, IHC, IF, IP
Cited applications:	IHC
Species specificity:	Human, Mouse, Rat; other species not tested.
Cited species:	Human
Calculated WSB2 MW:	404aa, 45 kDa
Observed WSB2 MW:	50 kDa
Positive WB detected in	Mouse kidney tissue, human brain tissue, human kidney tissue, mouse uterus tissue
Positive IP detected in	Mouse kidney tissue
Positive IHC detected in	Human prostate cancer tissue
Positive IF detected in	HepG2 cells
Recommended dilution:	WB: 1:500-1:5000 IP: 1:200-1:2000 IHC: 1:20-1:200 IF: 1:10-1:100

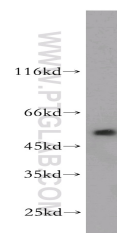
Application key: WB = Western blotting, IHC = Immunohistochemistry, IF = Immunofluorescence, IP = Immunoprecipitation

### Immunogen information

Immunogen:	Ag2768
GenBank accession number:	BC015887
Gene ID (NCBI):	55884
Full name:	WD repeat and SOCS box-containing 2

### Product information

Purification method:	Antigen affinity purification
Storage:	PBS with 0.1% sodium azide and 50% glycerol pH 7.3. Store at -20°C.



mouse kidney tissue were  
subjected to SDS PAGE

Detection:12124-2-AP 1:800) followed by western blot with  
with mouse kidney tissue 12124-2-AP(WSB2 antibody)  
lysate 6000ug. at dilution of 1:1000