

## SAFB2 Polyclonal Antibody

Catalog number: 11642-1-AP

Size: 22 µg/150 µl

Source: Rabbit

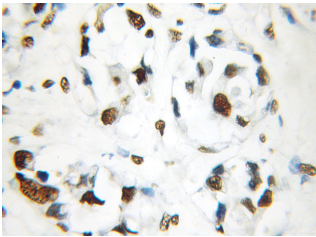
Isotype: IgG

Synonyms:

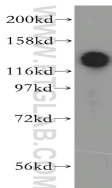
SAFB2; KIAA0138, SAF B2,

SAFB2, scaffold attachment

factor B2



Immunohistochemical of paraffin-embedded human breast cancer using 11642-1-AP (SAFB2 antibody) at dilution of 1:50 (under 40x lens)



human brain tissue were subjected to SDS PAGE followed by western blot with 11642-1-AP (SAFB2 antibody) at dilution of 1:500

### Background

SAFB2, also named as Scaffold attachment factor B2 or KIAA0138, is a 953 amino acid protein, which contains one SAP domain and one RRM (RNA recognition motif) domain. SAFB2 expressed at high levels in the CNS and at low levels in the liver. It also is expressed in a wide number of breast cancer cell lines. SAFB2 binds to scaffold/matrix attachment region (S/MAR) DNA and can function as an estrogen receptor corepressor and can also inhibit cell proliferation.

### Applications

<b>Tested applications:</b>	ELISA, WB, IHC
<b>Cited applications:</b>	IF, WB
<b>Species specificity:</b>	Human, Mouse; other species not tested.
<b>Cited species:</b>	Mouse
<b>Calculated SAFB2 MW:</b>	528aa, 57 kDa; 953aa, 107 kDa
<b>Observed SAFB2 MW:</b>	130 kDa
<b>Positive WB detected in</b>	Human brain tissue, BxPC-3 cells, HeLa cells, MCF7 cells, rat pancreas tissue
<b>Positive IHC detected in</b>	Human breast cancer tissue
<b>Recommended dilution:</b>	WB: 1:1000-1:10000 IHC: 1:20-1:200

Application key: WB = Western blotting, IHC = Immunohistochemistry, IF = Immunofluorescence, IP = Immunoprecipitation

### Immunogen information

<b>Immunogen:</b>	Ag2230
<b>GenBank accession number:</b>	BC025279
<b>Gene ID (NCBI):</b>	9667
<b>Full name:</b>	Scaffold attachment factor B2

### Product information

<b>Purification method:</b>	Antigen affinity purification
<b>Storage:</b>	PBS with 0.1% sodium azide and 50% glycerol pH 7.3. Store at -20°C.