

SEPT7 Polyclonal Antibody

Catalog number: 13818-1-AP

Size: 45 µg/150 µl

Source: Rabbit

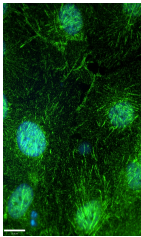
Isotype: IgG

Synonyms:

SEPT7; CDC10, CDC10 protein

homolog, CDC3, Nbla02942,

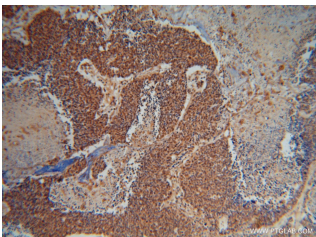
SEPT7, SEPT7A, septin 7



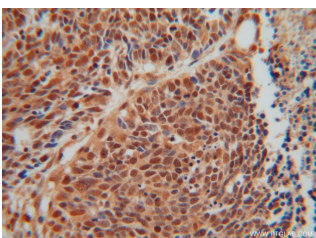
IF result of anti-SEPT7(13818-1-AP, 1:1000) with hTERT-RPE cell by Dr. Moshe Kim. Green: SEPT7. Blue: DNA. 1% PFA fixed



HepG2 cells were subjected to SDS PAGE followed by western blot with 13818-1-AP(SEPT7 antibody) at dilution of 1:2000



Immunohistochemical of paraffin-embedded human lung cancer using 13818-1-AP(SEPT7 antibody) at dilution of 1:100 (under 10x lens)



Immunohistochemical of paraffin-embedded human

Applications

Tested applications:	ELISA, IHC, IF, WB
Cited applications:	IF, WB
Species specificity:	Human, Mouse, Rat; other species not tested.
Cited species:	Human
Calculated SEPT7 MW:	51 kDa
Observed SEPT7 MW:	45-50 kDa
Positive WB detected in	HepG2 cells, A375 cells, HeLa cells, Jurkat cells, mouse testis tissue, rat testis tissue
Positive IHC detected in	Human lung cancer tissue, human gliomas tissue
Positive IF detected in	HTERT-RPE cells, HepG2 cells
Recommended dilution:	WB: 1:1000-1:10000 IHC: 1:20-1:200 IF: 1:20-1:200

Application key: WB = Western blotting, IHC = Immunohistochemistry, IF = Immunofluorescence, IP = Immunoprecipitation

Immunogen information

Immunogen:	Ag4907
GenBank accession number:	BC025987
Gene ID (NCBI):	989
Full name:	Septin 7

Product information

Purification method:	Antigen affinity purification
Storage:	PBS with 0.02% sodium azide and 50% glycerol pH 7.3. Store at -20°C.

lung cancer using 13818-1-
AP(SEPT7 antibody) at
dilution of 1:100 (under 40x
lens)