

EGR2 Polyclonal Antibody

Catalog number: 13491-1-AP

Size: 35 µg/150 µl

Source: Rabbit

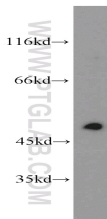
Isotype: IgG

Synonyms:

EGR2; AT591; CMT1D; CMT4E;

DKFZp686J1957; FLJ14547;

KROX20



mouse brain tissue were subjected to SDS PAGE followed by western blot with 13491-1-AP(EGR2 Antibody) at dilution of 1:1000

Background

Egr2 belongs to the Egr family that binds to DNA through highly conserved zinc finger domains and has a pivotal role in hindbrain development and myelination of the peripheral nervous system, development of T and/or B cells[PMID:19169262]. It has been demonstrated that Egr2 is induced early upon TCR engagement in a NFAT-dependent manner, and that overexpression of Egr2 inhibits T cell activation[PMID:23129747]. Overexpressing Egr2 shows an upregulation of E3-ligase Cbl-band reduced production of interleukin-2 (IL-2), suggesting that Egr2 is important for the maintenance of T cell tolerance by negatively regulating T cell activation[PMID: 15834410].

Applications

Tested applications:	ELISA, WB
Species specificity:	Human, mouse, rat; other species not tested.
Positive WB detected in:	Mouse brain tissue, human kidney tissue, mouse cerebellum tissue
Calculated EGR2 MW:	50.3kd
Observed EGR2 MW:	50kd
Recommended dilution:	WB: 1:500-1:5000

Application key: WB = Western blotting, IHC = Immunohistochemistry, IF = Immunofluorescence, IP = Immunoprecipitation, FC = Flow cytometry

Immunogen information

Immunogen:	Ag4313
GenBank accession number:	BC035625
Gene ID (NCBI):	1959
Full name:	Early growth response 2 (Krox-20 homolog, Drosophila)

Product information

Purification method:	Antigen affinity purification
Storage:	PBS with 0.02% sodium azide and 50% glycerol pH 7.3. Store at -20°C.