

TLE3 Polyclonal Antibody

Catalog number: 11372-1-AP

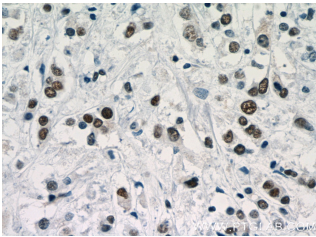
Size: 34 µg/150 µl

Source: Rabbit

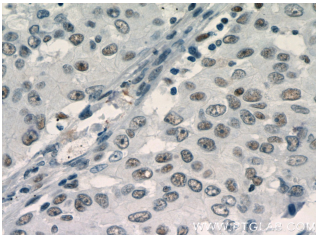
Isotype: IgG

Synonyms:

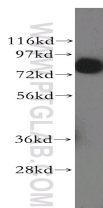
TLE3; ESG, ESG3, FLJ39460,
GRG3, HsT18976, KIAA1547,
TLE3



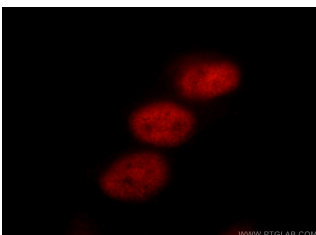
Immunohistochemistry of paraffin-embedded human breast cancer slide using 11372-1-AP (TLE3 Antibody) at dilution of 1:50



Immunohistochemistry of paraffin-embedded human lung cancer slide using 11372-1-AP (TLE3 Antibody) at dilution of 1:50



HepG2 cells were subjected to SDS PAGE followed by western blot with 11372-1-AP (TLE3 antibody) at dilution of 1:400



Immunofluorescent analysis of HepG2 cells using 11372-1-

Background

TLE3, also named as KIAA1547 and ESG3, belongs to the WD repeat Groucho/TLE family. It is a transcriptional corepressor that binds to a number of transcription factors. It inhibits the transcriptional activation mediated by CTNNB1 and TCF family members in Wnt signaling. The effects of full-length TLE family members may be modulated by association with dominant-negative AES. TLE3 is a member of the transducin-like enhancer of split (TLE) family of proteins that have been implicated in the tumorigenesis and classification of sarcomas. It is a candidate biomarker of response to taxane

Applications

Tested applications:	ELISA, WB, IHC, IF, IP
Cited applications:	ChIP, WB
Species specificity:	Human, Mouse, Rat; other species not tested.
Cited species:	Human, mouse
Calculated TLE3 MW:	772aa, 83 kDa
Observed TLE3 MW:	83kd
Positive WB detected in	HepG2 cells, A431 cells, HeLa cells, human lung tissue
Positive IP detected in	HeLa cells
Positive IHC detected in	Human breast cancer tissue, human lung cancer tissue
Positive IF detected in	HepG2 cells
Recommended dilution:	WB: 1:500-1:5000 IP: 1:200-1:1000 IHC: 1:20-1:200 IF: 1:10-1:100

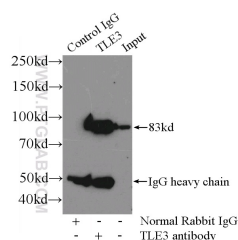
Application key: WB = Western blotting, IHC = Immunohistochemistry, IF = Immunofluorescence, IP = Immunoprecipitation

Immunogen information

Immunogen:	Ag1930
GenBank accession number:	BC015729
Gene ID (NCBI):	7090
Full name:	Transducin-like enhancer of split 3 (E(sp1) homolog, Drosophila)

Product information

Purification method:	Antigen affinity purification
Storage:	PBS with 0.1% sodium azide and 50% glycerol pH 7.3. Store at -20°C.



IP Result of anti-TLE3 (IP:11372-1-AP, 4ug;

**AP(TLE3 Antibody) at
dilution of 1:25 and
Rhodamine-Goat anti-Rabbit
IgG**

**Detection:11372-1-AP 1:300)
with HeLa cells lysate 1600ug.**