

Thrombomodulin Polyclonal Antibody

Catalog number: 14318-1-AP

Size: 73 µg/150 µl

Source: Rabbit

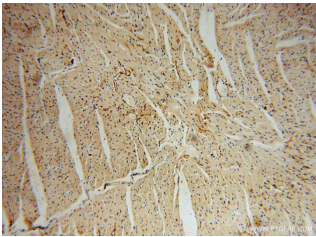
Isotype: IgG

Synonyms:

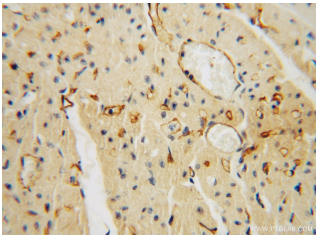
THBD; CD141, Fetomodulin,

THBD, THRM,

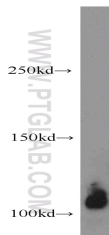
thrombomodulin, TM



Immunohistochemical of paraffin-embedded human heart using 14318-1-AP(THBD antibody) at dilution of 1:50 (under 10x lens)



Immunohistochemical of paraffin-embedded human heart using 14318-1-AP(THBD antibody) at dilution of 1:50 (under 40x lens)



human heart tissue were subjected to SDS PAGE followed by western blot with 14318-1-AP(THBD antibody) at dilution of 1:500

Applications

Tested applications:	ELISA, WB, IHC
Species specificity:	Human; other species not tested.
Calculated Thrombomodulin MW:	60 kDa
Observed Thrombomodulin MW:	105 kDa
Positive WB detected in	Human heart tissue
Positive IHC detected in	Human heart tissue
Recommended dilution:	WB: 1:200-1:2000 IHC: 1:20-1:200

Application key: WB = Western blotting, IHC = Immunohistochemistry, IF = Immunofluorescence, IP = Immunoprecipitation

Immunogen information

Immunogen:	Ag5558
GenBank accession number:	BC035602
Gene ID (NCBI):	7056
Full name:	Thrombomodulin

Product information

Purification method:	Antigen affinity purification
Storage:	PBS with 0.02% sodium azide and 50% glycerol pH 7.3. Store at -20°C.