

NEK11 Polyclonal Antibody

Catalog number: 12710-1-AP

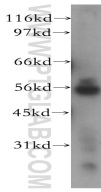
Size: 20 µg/150 µl

Source: Rabbit

Isotype: IgG

Synonyms:

NEK11; FLJ23495, NEK11, NimA related protein kinase 11



HeLa cells were subjected to SDS PAGE followed by western blot with 12710-1-AP(NEK11 antibody) at dilution of 1:400

Background

NEK11(Serine/threonine-protein kinase) belongs to the NIMA family of kinases, which are involved in DNA replication and genotoxic stress responses. It controls degradation of CDC25A by directly phosphorylating it on residues whose phosphorylation is required for BTRC-mediated polyubiquitination and degradation. It has 4 isoforms produced by alternative splicing.

Applications

Tested applications:	ELISA, WB
Species specificity:	Human, Mouse, Rat; other species not tested.
Calculated NEK11 MW:	54kd, 74kd
Observed NEK11 MW:	54kd
Positive WB detected in	HeLa cells, HepG2 cells
Recommended dilution:	WB: 1:500-1:5000

Application key: WB = Western blotting, IHC = Immunohistochemistry, IF = Immunofluorescence, IP = Immunoprecipitation

Immunogen information

Immunogen:	Ag3392
GenBank accession number:	BC028587
Gene ID (NCBI):	79858
Full name:	NIMA (never in mitosis gene a)- related kinase 11

Product information

Purification method:	Antigen affinity purification
Storage:	PBS with 0.1% sodium azide and 50% glycerol pH 7.3. Store at -20°C.