

APC2 Polyclonal Antibody

Catalog number: 13559-1-AP

Size: 22 µg/150 µl

Source: Rabbit

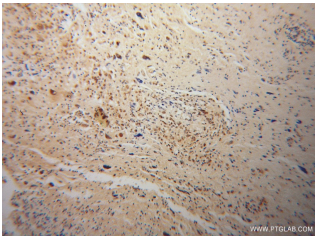
Isotype: IgG

Synonyms:

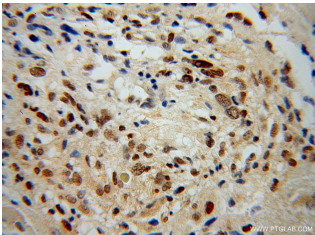
ANAPC2; ANAPC2, APC2,

Cyclosome subunit 2,

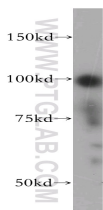
KIAA1406, RP11 350014.5



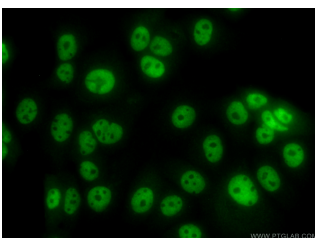
Immunohistochemical of paraffin-embedded human gliomas using 13559-1-AP (ANAPC2 antibody) at dilution of 1:100 (under 10x lens)



Immunohistochemical of paraffin-embedded human gliomas using 13559-1-AP (ANAPC2 antibody) at dilution of 1:100 (under 40x lens)



MCF7 cells were subjected to SDS PAGE followed by western blot with 13559-1-AP (ANAPC2 antibody) at dilution of 1:500



Immunofluorescent analysis of (10% Formaldehyde) fixed

Applications

Tested applications:	ELISA, WB, IHC, IP, IF
Species specificity:	Human, Mouse, Rat; other species not tested.
Calculated APC2 MW:	822aa, 94 kDa
Observed APC2 MW:	97 kDa
Positive WB detected in	MCF7 cells
Positive IP detected in	MCF-7 cells
Positive IHC detected in	Human gliomas tissue
Positive IF detected in	MCF-7 cells
Recommended dilution:	WB: 1:500-1:5000
	IP: 1:200-1:1000
	IHC: 1:20-1:200
	IF: 1:50-1:500

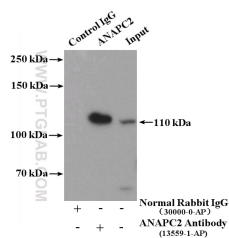
Application key: WB = Western blotting, IHC = Immunohistochemistry, IF = Immunofluorescence, IP = Immunoprecipitation

Immunogen information

Immunogen:	Ag4427
GenBank accession number:	BC032503
Gene ID (NCBI):	29882
Full name:	Anaphase promoting complex subunit 2

Product information

Purification method:	Antigen affinity purification
Storage:	PBS with 0.02% sodium azide and 50% glycerol pH 7.3. Store at -20°C.



IP Result of anti-ANAPC2 (IP:13559-1-AP, 4ug;

MCF-7 cells using 13559-1-AP (Detection:13559-1-AP 1:300)
ANAPC2 Antibody) at with MCF-7 cells lysate
dilution of 1:50 and Alexa 3200ug.
Fluor 488-conjugated
AffiniPure Goat Anti-Rabbit
IgG(H+L)