

PRKCSH Polyclonal Antibody

Catalog number: 12148-1-AP

Size: 39 µg/150 µl

Source: Rabbit

Isotype: IgG

Synonyms:

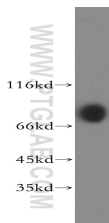
PRKCSH; 80K H protein, AGE

R2, G19P1, Glucosidase 2

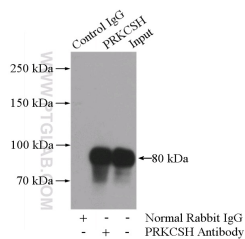
subunit beta, Glucosidase II

subunit beta, PCLD, PKCSH,

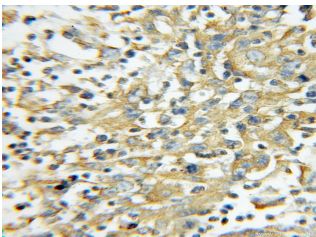
PLD1, PRKCSH



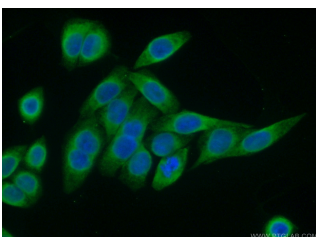
HeLa cells were subjected to SDS PAGE followed by western blot with 12148-1-AP (PRKCSH antibody) at dilution of 1:1000



IP Result of anti-PRKCSH (IP:12148-1-AP, 4µg; Detection:12148-1-AP 1:1000) with HeLa cells lysate 2000µg.



Immunohistochemical of paraffin-embedded human colon cancer using 12148-1-AP (PRKCSH antibody) at dilution of 1:100 (under 10x lens)



Immunofluorescent analysis

Background

PRKCSH encodes the beta-subunit of glucosidase II, an N-linked glycan-processing enzyme in the endoplasmic reticulum (ER). This protein is an acidic phospho-protein known to be a substrate for protein kinase C. Defects in PRKCSH are a cause of an autosomal dominant polycystic liver disease (PCLD). Glucosidase II is an ER-localized enzyme that contains α and β subunits (Glucosidase II α and Glucosidase II β) which form a defined heterodimeric complex.

Applications

| | |
|--------------------------|--|
| Tested applications: | ELISA, WB, IHC, IP, IF |
| Cited applications: | IF |
| Species specificity: | Human, Mouse, Rat; other species not tested. |
| Cited species: | Human |
| Calculated PRKCSH MW: | 80 kDa |
| Observed PRKCSH MW: | 80 kDa |
| Positive WB detected in | HeLa cells, A431 cells, mouse liver tissue |
| Positive IP detected in | HeLa cells |
| Positive IHC detected in | Human colon cancer tissue |
| Positive IF detected in | HeLa cells |
| Recommended dilution: | WB: 1:1000-1:10000 |
| | IP: 1:500-1:5000 |
| | IHC: 1:20-1:200 |
| | IF: 1:50-1:500 |

Application key: WB = Western blotting, IHC = Immunohistochemistry, IF = Immunofluorescence, IP = Immunoprecipitation

Immunogen information

| | |
|---------------------------|----------------------------------|
| Immunogen: | Ag2796 |
| GenBank accession number: | BC013586 |
| Gene ID (NCBI): | 5589 |
| Full name: | Protein kinase C substrate 80K-H |

Product information

| | |
|----------------------|---|
| Purification method: | Antigen affinity purification |
| Storage: | PBS with 0.1% sodium azide and 50% glycerol pH 7.3. Store at -20°C. |

of (10% Formaldehyde) fixed
HeLa cells using 12148-1-AP (
PRKCSH Antibody) at dilution
of 1:50 and Alexa Fluor 488-
conjugated AffiniPure Goat
Anti-Rabbit IgG(H+L)