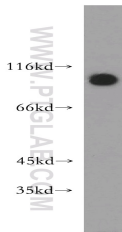
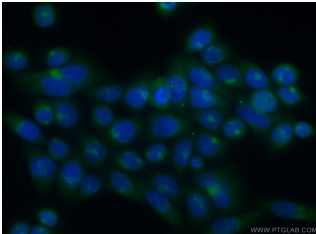


ATP2C1 Polyclonal Antibody

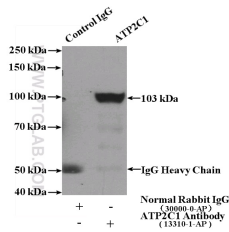
Catalog number: 13310-1-AP
Size: 30 µg/150 µl
Source: Rabbit
Isotype: IgG
Synonyms:
ATP2C1; ATP dependent Ca(2+) pump PMR1, ATP2C1, ATP2C1A, ATPase 2C1, HHD, hSPCA1, KIAA1347, PMR1, PMR1L, SPCA1



HeLa cells were subjected to SDS PAGE followed by western blot with 13310-1-AP(ATP2C1 antibody) at dilution of 1:400



Immunofluorescent analysis of (10% Formaldehyde) fixed HeLa cells using 13310-1-AP(ATP2C1 Antibody) at dilution of 1:50 and Alexa Fluor 488-conjugated AffiniPure Goat Anti-Rabbit IgG(H+L)



IP Result of anti-ATP2C1 (IP:13310-1-AP, 4µg; Detection:13310-1-AP 1:500) with mouse kidney tissue lysate 4000µg.

Applications

Tested applications:	ELISA, WB, IP, IF
Species specificity:	Human,Mouse,Rat; other species not tested.
Calculated ATP2C1 MW:	919aa,101 kDa
Observed ATP2C1 MW:	95-103 kDa
Positive WB detected in	HeLa cells, A431 cells, human brain tissue
Positive IP detected in	Mouse kidney tissue
Positive IF detected in	HeLa cells
Recommended dilution:	WB: 1:200-1:2000
	IP: 1:200-1:2000
	IF: 1:20-1:200

Application key: WB = Western blotting, IHC= Immunohistochemistry, IF= Immunofluorescence, IP= Immunoprecipitation

Immunogen information

Immunogen:	Ag4143
GenBank accession number:	BC028139
Gene ID (NCBI):	27032
Full name:	ATPase, Ca ⁺⁺ transporting, type 2C, member 1

Product information

Purification method:	Antigen affinity purification
Storage:	PBS with 0.02% sodium azide and 50% glycerol pH 7.3. Store at -20°C.