

Cyclin E2 Polyclonal Antibody

Catalog number: 11935-1-AP

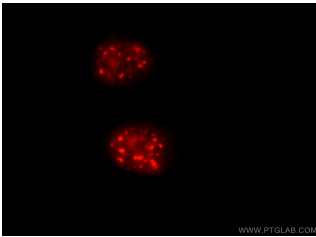
Size: 20 µg/150 µl

Source: Rabbit

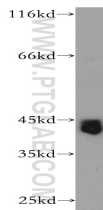
Isotype: IgG

Synonyms:

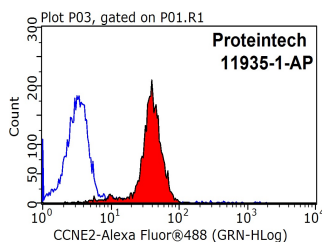
CCNE2; CCNE2, CYCE2, cyclin E2, G1/S specific cyclin E2



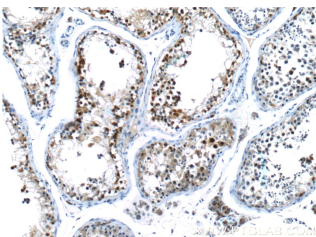
Immunofluorescent analysis of HeLa cells using 11935-1-AP (CCNE2 Antibody) at dilution of 1:50 and Rhodamine-Goat anti-Rabbit IgG



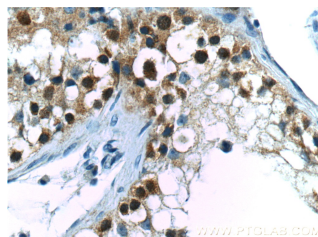
Jurkat cells were subjected to SDS PAGE followed by western blot with 11935-1-AP (CCNE2 antibody) at dilution of 1:800



1X10⁶ HeLa cells were stained with 0.2 µg CCNE2 antibody (11935-1-AP, red) and control antibody (blue). Fixed with 90% MeOH blocked with 3% BSA (30 min). Alexa Fluor 488-conjugated AffiniPure Goat Anti-Rabbit IgG(H+L) with dilution 1:1500.



Immunohistochemistry of



Immunohistochemistry of

Background

Cyclin E2 (CCNE2) belongs to the highly conserved cyclin family, whose members are characterized by a dramatic periodicity in protein abundance throughout the cell cycle. Cyclins function as regulators of cyclin-dependent kinases (CDKs). Different cyclins exhibit distinct expression and degradation patterns which contribute to the temporal coordination of cell cycle events. CCNE2 forms a complex with and functions as a regulatory subunit of CDK2 and has been shown to specifically interact with CIP/KIP family of CDK inhibitors. CCNE2 plays a role in cell cycle G1/S transition and its expression peaks at the G1-S phase. Whereas cyclin E1 is expressed in most proliferating normal and tumor cells, cyclin E2 levels are low or undetectable in nontransformed cells, and are elevated in tumor-derived cells.

Applications

Tested applications:	ELISA, WB, IF, FC, IHC
Cited applications:	WB
Species specificity:	Human; other species not tested.
Cited species:	Human
Calculated Cyclin E2 MW:	374aa, 44 kDa
Observed Cyclin E2 MW:	44 kDa
Positive WB detected in	Jurkat cells
Positive IHC detected in	Human testis tissue, human breast cancer tissue
Positive IF detected in	HeLa cells
Positive FC detected in	HeLa cells
Recommended dilution:	WB: 1:500-1:5000
	IHC: 1:20-1:200
	IF: 1:20-1:200
	FC: N/A

Application key: WB = Western blotting, IHC = Immunohistochemistry, IF = Immunofluorescence, IP = Immunoprecipitation

Immunogen information

Immunogen:	Ag2532
GenBank accession number:	BC020729
Gene ID (NCBI):	9134
Full name:	Cyclin E2

Product information

Purification method:	Antigen affinity purification
Storage:	PBS with 0.1% sodium azide and 50% glycerol pH 7.3. Store at -20°C.

paraffin-embedded human testis tissue slide using 11935-1-AP(CCNE2 Antibody) at dilution of 1:50 (under 10x lens).

paraffin-embedded human testis tissue slide using 11935-1-AP(CCNE2 Antibody) at dilution of 1:50 (under 40x lens).