

SERPINE2 Polyclonal Antibody

Catalog number: 11303-1-AP

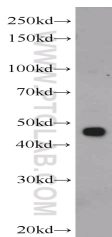
Size: 28 µg/150 µl

Source: Rabbit

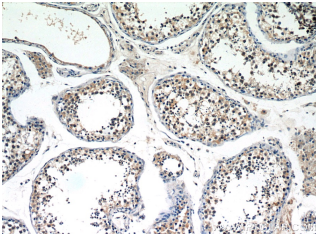
Isotype: IgG

Synonyms:

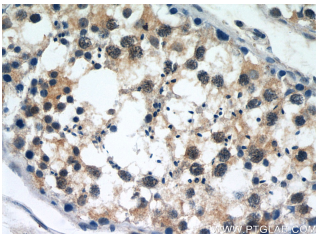
SERPINE2; GDN, Glia derived nexin, Peptidase inhibitor 7, PI 7, PI7, PN 1, PN1, PNI, Protease nexin 1, Protease nexin I, Serpin E2, SERPINE2



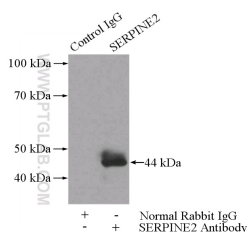
C6 cells were subjected to SDS PAGE followed by western blot with 11303-1-AP(SERPINE2 Antibody) at dilution of 1:600



Immunohistochemistry of paraffin-embedded human testis slide using 11303-1-AP(SERPINE2 Antibody) at dilution of 1:50



Immunohistochemistry of paraffin-embedded human testis slide using 11303-1-AP(SERPINE2 Antibody) at dilution of 1:50



Background

SERPINE2 also called protease nexin-1 or glial-derived neurite promoting factor, is a member of the serine protease inhibitor (SERPIN) superfamily. It would be a potent inhibitor of the urokinase-plasminogen activator (uPA), tissue-type PA (tPA), thrombin, trypsin, factor Xia, and prostasin. SERPINE2 is widely expressed in various tissues, including endothelial cells, fibroblasts, smooth muscle cells, tumor cells, glial cells, neurons, and placental cells.

Applications

Tested applications:	ELISA, IHC, WB, IP
Cited applications:	IHC
Species specificity:	Human, Mouse, Rat; other species not tested.
Cited species:	Human
Calculated SERPINE2 MW:	44 kDa
Observed SERPINE2 MW:	44-50 kDa
Positive WB detected in	C6 cells, A549 cells, MCF7 cells, rat brain tissue, rat heart tissue
Positive IP detected in	A549 cells
Positive IHC detected in	Human testis tissue, human pancreas cancer tissue
Recommended dilution:	WB: 1:200-1:2000 IP: 1:200-1:1000 IHC: 1:20-1:200

Application key: WB = Western blotting, IHC = Immunohistochemistry, IF = Immunofluorescence, IP = Immunoprecipitation

Immunogen information

Immunogen:	Ag1830
GenBank accession number:	BC015663
Gene ID (NCBI):	5270
Full name:	Serpin peptidase inhibitor, clade E (nexin, plasminogen activator inhibitor type 1), member 2

Product information

Purification method:	Antigen affinity purification
Storage:	PBS with 0.02% sodium azide and 50% glycerol pH 7.3. Store at -20°C.

IP Result of anti-SERPINE2
(IP:11303-1-AP, 3ug;
Detection:11303-1-AP 1:300)
with A549 cells lysate 2800ug.