

KDM3A, JMJD1A Polyclonal Antibody

Catalog number: 12835-1-AP

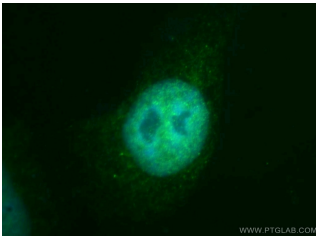
Size: 20 µg/150 µl

Source: Rabbit

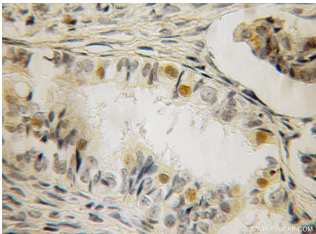
Isotype: IgG

Synonyms:

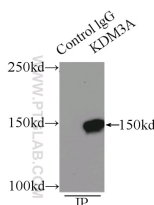
KDM3A; DKFZp686A24246,
DKFZp686P07111, JHDM2A,
JHDM2A, JMJD1, JMJD1A,
KDM3A, KIAA0742, lysine (K)
demethylase 3A, Lysine specific
demethylase 3A, TSGA



Immunofluorescent analysis of HepG2 cells, using KDM3A antibody 12835-1-AP at 1:50 dilution and FITC-labeled donkey anti-rabbit IgG (green). Blue pseudocolor = DAPI (fluorescent DNA dye).



Immunohistochemical of paraffin-embedded human ovary tumor using 12835-1-AP (KDM3A, JMJD1A antibody) at dilution of 1:100 (under 10x lens)



IP Result of anti-KDM3A, JMJD1A (IP: 12835-1-AP, 5 µg; Detection: 12835-1-AP 1:1000) with HeLa cells lysate 2500 µg.

Background

KDM3A, also name as JMJD1A, JHDM2A, JMJD1, JMJD1A, KIAA0742 and TSGA, belongs to the JHDM2 histone demethylase family. It is a histone demethylase that specifically demethylates 'Lys-9' of histone H3, thereby playing a central role in histone code. It is involved in spermatogenesis by regulating expression of target genes such as PRM1 and TMP1 which are required for packaging and condensation of sperm chromatin. It is involved in obesity resistance through regulation of metabolic genes such as PPARA and UCP1. (PubMed:16603237), JMJD1A is a useful biomarker for hypoxic tumor cells and a prognostic marker that could be a promising therapeutic target against CRC. (PMID:20823141) This antibody recognize the N-term of KDM3A (JMJD1A).

Applications

Tested applications:	ELISA, IF, IP, WB, IHC
Cited applications:	ChIP, IF, IHC, WB
Species specificity:	Human, Mouse; other species not tested.
Cited species:	Human, mouse
Calculated KDM3A, JMJD1A MW:	150 kDa
Observed KDM3A, JMJD1A MW:	150 kDa
Positive WB detected in	HeLa cells, MCF7 cells
Positive IP detected in	HeLa cells
Positive IHC detected in	Human ovary tumor tissue, human kidney tissue, human ovary tissue
Positive IF detected in	HepG2 cells
Recommended dilution:	WB: 1:1000-1:10000 IP: 1:500-1:5000 IHC: 1:20-1:200 IF: 1:20-1:200

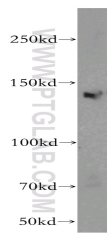
Application key: WB = Western blotting, IHC = Immunohistochemistry, IF = Immunofluorescence, IP = Immunoprecipitation

Immunogen information

Immunogen:	Ag3581
GenBank accession number:	BC038297
Gene ID (NCBI):	55818
Full name:	Lysine (K)-specific demethylase 3A

Product information

Purification method:	Antigen affinity purification
Storage:	PBS with 0.1% sodium azide and 50% glycerol pH 7.3. Store at -20°C.



HeLa cells were subjected to SDS PAGE followed by western blot with 12835-1-AP(KDM3A, JMJD1A antibody) at dilution of 1:2000