

## PITPNB Polyclonal Antibody

Catalog number: 13110-1-AP

Size: 45 µg/150 µl

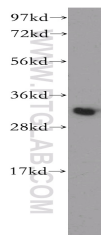
Source: Rabbit

Isotype: IgG

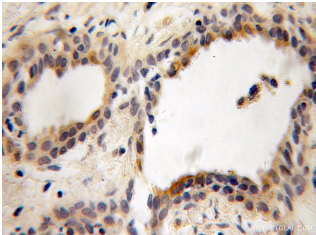
Synonyms:

PITPNB; PI-TP-beta; PtdInsTP;

VIB1B



mouse lung tissue were subjected to SDS PAGE followed by western blot with 13110-1-AP(PITPNB Antibody) at dilution of 1:1200



Immunohistochemistry of paraffin-embedded human prostate cancer using 13110-1-AP(PITPNB Antibody) at Dilution 1:100 (under 10x lens)

### Applications

Tested applications:	ELISA, WB, IHC
Species specificity:	Human, mouse, rat; other species not tested.
Positive WB detected in:	Mouse lung tissue, HeLa cells, K-562 cells, Raji cells
Calculated PITPNB MW:	272aa,32kd
Observed PITPNB MW:	32kd
Positive IHC detected in:	Human prostate cancer
Recommended dilution:	WB: 1:500-1:5000 IHC: 1:50-1:200

Application key: WB = Western blotting, IHC = Immunohistochemistry, IF = Immunofluorescence, IP = Immunoprecipitation, FC = Flow cytometry

### Immunogen information

Immunogen:	Ag3774
GenBank accession number:	BC031427
Gene ID (NCBI):	23760
Full name:	Phosphatidylinositol transfer protein, beta

### Product information

Purification method:	Antigen affinity purification
Storage:	PBS with 0.1% sodium azide and 50% glycerol pH 7.3. Store at -20°C.