

PABPC1,PABP Polyclonal Antibody

Catalog number: 10970-1-AP

Size: 35 µg/150 µl

Source: Rabbit

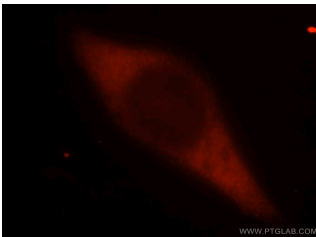
Isotype: IgG

Synonyms:

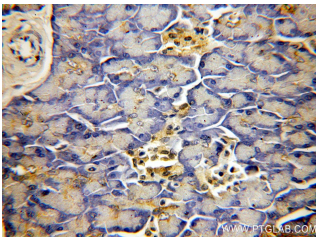
PABPC1; PAB1, PABP, PABP 1,

PABP1, PABPC1, PABPC2,

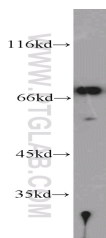
PABPL1, Poly(A) binding protein 1



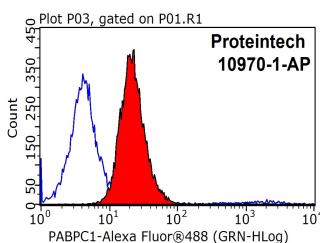
Immunofluorescent analysis of MCF-7 cells, using PABPC1 antibody 10970-1-AP at 1:25 dilution and Rhodamine-labeled goat anti-rabbit IgG (red).



Immunohistochemical of paraffin-embedded human pancreas using 10970-1-AP(PABPC1,PABP antibody) at dilution of 1:50 (under 40x lens)



mouse testis tissue were subjected to SDS PAGE followed by western blot with 10970-1-AP(PABPC1,PABP antibody) at dilution of 1:1000



Background

The poly(A)-binding protein (PABP), which is found complexed to the 3-prime poly(A) tail of eukaryotic mRNA, is required for poly(A) shortening and translation initiation [PMID: 21989405]. Polyadenylate-binding protein 1 (PABPC1) is a cytoplasmic-nuclear shuttling protein important for protein translation initiation, and both RNA processing and stability. In the cytoplasm, PABPC1 binds to the 3' poly(A) tail of eukaryotic mRNAs through its RNA-recognition motifs (RRM) and interacts with the N-terminus of eIF4G, part of the eIF4F complex associated with the 5' cap structure [PMID:20009508, 17381337].

Applications

Tested applications:	ELISA, WB, IHC, IF, FC, IP
Species specificity:	Human,Mouse,Rat; other species not tested.
Calculated PABPC1,PABP MW:	71 kDa
Observed PABPC1,PABP MW:	71kd
Positive WB detected in	Mouse testis tissue, HeLa cells, PC-3 cells, rat testis tissue
Positive IP detected in	Mouse testis tissue
Positive IHC detected in	Human pancreas tissue, human testis tissue
Positive IF detected in	MCF-7 cells
Positive FC detected in	MCF-7 cells
Recommended dilution:	WB: 1:500-1:5000 IP: 1:200-1:2000 IHC: 1:20-1:200 IF: 1:10-1:100 FC: N/A

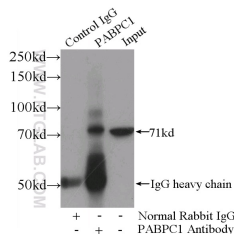
Application key: WB = Western blotting, IHC = Immunohistochemistry, IF = Immunofluorescence, IP = Immunoprecipitation

Immunogen information

Immunogen:	Ag1422
GenBank accession number:	BC015958
Gene ID (NCBI):	26986
Full name:	Poly(A) binding protein, cytoplasmic 1

Product information

Purification method:	Antigen affinity purification
Storage:	PBS with 0.02% sodium azide and 50% glycerol pH 7.3. Store at -20°C.



1X10⁶ MCF-7 cells were stained with 0.2ug PABPC1,PABP antibody (10970-1-AP, red) and control antibody (blue). Fixed with 90% MeOH blocked with 3% BSA (30 min). Alexa Fluor 488-conjugated AffiniPure Goat Anti-Rabbit IgG(H+L) with dilution 1:1000.

IP Result of anti-PABPC1,PABP (IP:10970-1-AP, 4ug; Detection:10970-1-AP 1:700) with mouse testis tissue lysate 4000ug.