

## GPD1 Polyclonal Antibody

Catalog number: 13451-1-AP

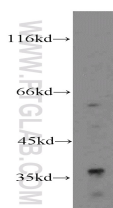
Size: 20 µg/150 µl

Source: Rabbit

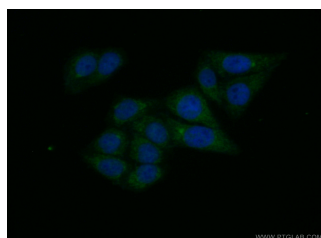
Isotype: IgG

Synonyms:

GPD1; FLJ26652, GPD C, GPD1,  
GPDH C



HepG2 cells were subjected to SDS PAGE followed by western blot with 13451-1-AP(GPD1 antibody) at dilution of 1:400



Immunofluorescent analysis of ( 10% Formaldehyde ) fixed HepG2 cells using 13451-1-AP( GPD1 Antibody) at dilution of 1:50 and Alexa Fluor 488-conjugated AffiniPure Goat Anti-Rabbit IgG(H+L)

### Applications

Tested applications:	ELISA, WB, IF
Species specificity:	Human,Mouse,Rat; other species not tested.
Calculated GPD1 MW:	349aa,38 kDa
Observed GPD1 MW:	38-42 kDa
Positive WB detected in	HepG2 cells
Positive IF detected in	HepG2 cells
Recommended dilution:	WB: 1:200-1:1000 IF: 1:20-1:200

Application key: WB = Western blotting, IHC = Immunohistochemistry, IF = Immunofluorescence, IP = Immunoprecipitation

### Immunogen information

Immunogen:	Ag4278
GenBank accession number:	BC032234
Gene ID (NCBI):	2819
Full name:	Glycerol-3-phosphate dehydrogenase 1 (soluble)

### Product information

Purification method:	Antigen affinity purification
Storage:	PBS with 0.02% sodium azide and 50% glycerol pH 7.3. Store at -20°C.