

SUB1 Polyclonal Antibody

Catalog number: 11956-1-AP

Size: 87 µg/150 µl

Source: Rabbit

Isotype: IgG

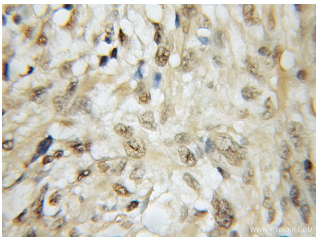
Synonyms:

SUB1; p14, P15, PC4, Positive

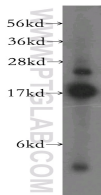
cofactor 4, RPO2TC1, SUB1,

SUB1 homolog, SUB1 homolog

(*S. cerevisiae*)



Immunohistochemical of paraffin-embedded human gliomas using 11956-1-AP (SUB1 antibody) at dilution of 1:50 (under 10x lens)



HeLa cells were subjected to SDS PAGE followed by western blot with 11956-1-AP (SUB1 antibody) at dilution of 1:500

Background

SUB1 gene encodes activated RNA polymerase II transcriptional coactivator p15, also termed as positive cofactor 4 (PC4) or p14. SUB1 is a sort of general coactivator that functions in assembling and stabilization of transcription complex. It has DNA binding activity and is localized in the nucleus, multiple modification sites of phosphorylation or acetylation may turn it appear slightly shifted molecular weight. Catalog#11956-1-AP is a rabbit polyclonal antibody raised against full-length human SUB1. This antibody recognizes 14-16 kDa (P14 or P15), 20 kDa (phospho form) and 30 kDa (Dimer form).

Applications

Tested applications:	ELISA, WB, IHC
Species specificity:	Human, Mouse; other species not tested.
Calculated SUB1 MW:	14 kDa
Observed SUB1 MW:	18kd and 23-25kd
Positive WB detected in:	HeLa cells, rat liver tissue
Positive IHC detected in:	Human gliomas tissue
Recommended dilution:	WB: 1:500-1:5000 IHC: 1:20-1:200

Application key: WB = Western blotting, IHC = Immunohistochemistry, IF = Immunofluorescence, IP = Immunoprecipitation

Immunogen information

Immunogen:	Ag2559
GenBank accession number:	BC022339
Gene ID (NCBI):	10923
Full name:	SUB1 homolog (<i>S. cerevisiae</i>)

Product information

Purification method:	Antigen affinity purification
Storage:	PBS with 0.1% sodium azide and 50% glycerol pH 7.3. Store at -20°C.