

Coproporphyrinogen oxidase Polyclonal Antibody

Catalog number: 12211-1-AP

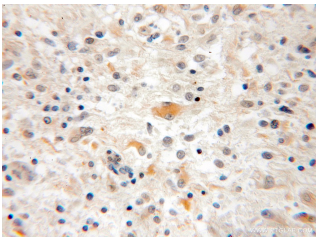
Size: 43 µg/150 µl

Source: Rabbit

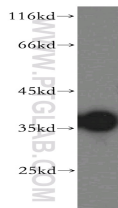
Isotype: IgG

Synonyms:

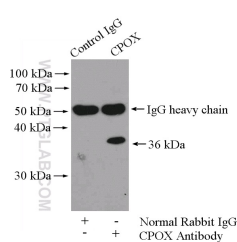
CPOX; Coprogen oxidase,
Coproporphyrinogen oxidase,
Coproporphyrinogenase, COX,
CPO, CPOX, CPX, HCP



Immunohistochemical of paraffin-embedded human medulloblastoma using 12211-1-AP (CPOX antibody) at dilution of 1:100 (under 10x lens)



human liver tissue were subjected to SDS PAGE followed by western blot with 12211-1-AP (CPOX antibody) at dilution of 1:500



IP Result of anti-CPOX (IP:12211-1-AP, 4µg; Detection:12211-1-AP 1:500) with HepG2 cells lysate 2400µg.

Background

CPOX (Coproporphyrinogen-III oxidase, mitochondrial) is also named as CPO and CPX. Human CPO is a 76 kDa protein that is active as a homodimer in the mitochondrial intermembrane space (PMID:16159891). Mutations in human CPO gene predict the clinical outcome of the disease, with either hepatic hereditary coproporphyrinemia or hematological manifestations of erythropoietic protoporphyria. CPOX has a transit peptide of 110 aa and the chain contains 344 aa.

Applications

Tested applications:	ELISA, WB, IHC, IP
Cited applications:	IHC
Species specificity:	Human, Mouse, Rat; other species not tested.
Cited species:	Human
Calculated	454aa, 50 kDa
Coproporphyrinogen oxidase	
MW:	
Observed	36kd
Coproporphyrinogen oxidase	
MW:	
Positive WB detected in	Human liver tissue, HepG2 cells, Jurkat cells, K-562 cells
Positive IP detected in	HepG2 cells
Positive IHC detected in	Human medulloblastoma tissue, human liver tissue
Recommended dilution:	WB: 1:1000-1:10000
	IP: 1:200-1:2000
	IHC: 1:20-1:200

Application key: WB = Western blotting, IHC = Immunohistochemistry, IF = Immunofluorescence, IP = Immunoprecipitation

Immunogen information

Immunogen:	Ag2858
GenBank accession number:	BC023551
Gene ID (NCBI):	1371
Full name:	Coproporphyrinogen oxidase

Product information

Purification method:	Antigen affinity purification
Storage:	PBS with 0.1% sodium azide and 50% glycerol pH 7.3. Store at -20°C.