

MPV17 Polyclonal Antibody

Catalog number: 10310-1-AP

Size: 20 µg/150 µl

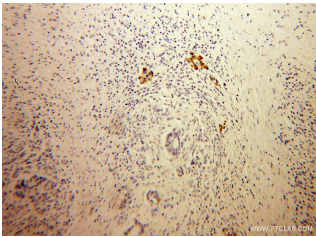
Source: Rabbit

Isotype: IgG

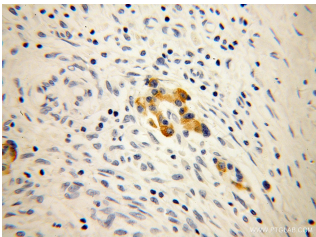
Synonyms:

MPV17; MPV17, Protein

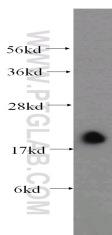
Mpv17, SYM1



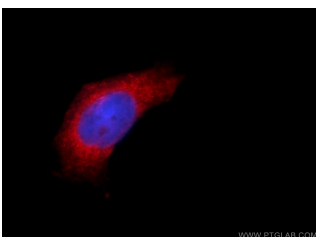
Immunohistochemical of paraffin-embedded human pancreas cancer using 10310-1-AP (MPV17 antibody) at dilution of 1:50 (under 10x lens)



Immunohistochemical of paraffin-embedded human pancreas cancer using 10310-1-AP (MPV17 antibody) at dilution of 1:50 (under 40x lens)



mouse kidney tissue were subjected to SDS PAGE followed by western blot with 10310-1-AP (MPV17 antibody) at dilution of 1:500



Immunofluorescent analysis of HeLa cells using 10310-1-AP (MPV17 Antibody) at

Background

MPV17, also termed as SYM1, encodes an inner mitochondrial membrane protein. It's potential candidate that may account for the mitochondrial (mt) DNA depletion syndromes (MDDS) characterized by a severe, tissue-specific decrease of mtDNA copy number and ultimate organ failure. It's a human ortholog of the mouse kidney disease gene Mpv17. Absence or malfunction of MPV17 causes oxidative phosphorylation (OXPHOS) failure and mtDNA depletion, not only in affected individuals but also in Mpv17^{-/-} mice. MPV17 contribute to ROS homeostasis, but the downstream signaling is unknown yet. Catalog# 10310-1-AP is a rabbit polyclonal antibody raised against the full-length of human MPV17.

Applications

Tested applications:	ELISA, WB, IHC, IF
Cited applications:	2D BNGE, IF, WB
Species specificity:	Human, Mouse; other species not tested.
Cited species:	Human, mouse
Calculated MPV17 MW:	20 kDa
Observed MPV17 MW:	20kd
Positive WB detected in	Mouse kidney tissue, human brain tissue, human heart tissue, human liver tissue, human placenta tissue
Positive IHC detected in	Human pancreas cancer tissue
Positive IF detected in	HeLa cells
Recommended dilution:	WB: 1:200-1:2000 IHC: 1:20-1:200 IF: 1:10-1:100

Application key: WB = Western blotting, IHC = Immunohistochemistry, IF = Immunofluorescence, IP = Immunoprecipitation

Immunogen information

Immunogen:	Ag0312
GenBank accession number:	BC001115
Gene ID (NCBI):	4358
Full name:	Mpv17 mitochondrial inner membrane protein

Product information

Purification method:	Antigen affinity purification
Storage:	PBS with 0.02% sodium azide and 50% glycerol pH 7.3. Store at -20°C.

dilution of 1:25 and Alexa
Fluor 594-conjugated
AffiniPure Goat Anti-Rabbit
IgG(H+L)