

## UBE2G1 Polyclonal Antibody

Catalog number: 12012-1-AP

Size: 20 µg/150 µl

Source: Rabbit

Isotype: IgG

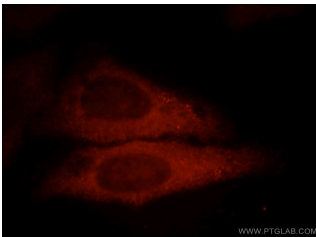
Synonyms:

UBE2G1; E217K, UBC7, UBE2G,

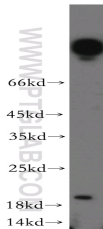
UBE2G1, Ubiquitin carrier

protein G1, Ubiquitin protein

ligase G1



Immunofluorescent analysis of HepG2 cells, using UBE2G1 antibody 12012-1-AP at 1:25 dilution and Rhodamine-labeled goat anti-rabbit IgG (red).



HeLa cells were subjected to SDS PAGE followed by western blot with 12012-1-AP(UBE2G1 antibody) at dilution of 1:100

### Applications

Tested applications:	ELISA, WB, IF
Cited applications:	WB
Species specificity:	Human, Mouse, Rat; other species not tested.
Calculated UBE2G1 MW:	170aa, 19 kDa
Observed UBE2G1 MW:	20 kDa
Positive WB detected in:	HeLa cells
Positive IF detected in:	HepG2 cells
Recommended dilution:	WB: 1:200-1:2000 IF: 1:10-1:100

Application key: WB = Western blotting, IHC = Immunohistochemistry, IF = Immunofluorescence, IP = Immunoprecipitation

### Immunogen information

Immunogen:	Ag2625
GenBank accession number:	BC026288
Gene ID (NCBI):	7326
Full name:	Ubiquitin-conjugating enzyme E2G 1 (UBC7 homolog, yeast)

### Product information

Purification method:	Antigen affinity purification
Storage:	PBS with 0.02% sodium azide and 50% glycerol pH 7.3. Store at -20°C.